
Community Safety Scorecard

City of Los Angeles 2011

Project completed in collaboration
with Advancement Project's Urban Peace
& Healthy City programs and
the Violence Prevention Coalition



Advancement Project

Closing the Opportunity Gap

Advancement Project is a public policy change organization rooted in the civil rights movement. We engineer large-scale systems change to remedy inequality, expand opportunity and open paths to upward mobility. Our goal is that members of all communities have the safety, opportunity and health they need to thrive.

- **Healthy City:** Transforms how people access and use information about their communities. Healthy City is an information + action resource that unites community voices, rigorous research and innovative technologies to solve the root causes of social inequity.
- **Urban Peace:** Reduces and prevents community violence, making poor neighborhoods safer so that children can learn, families can thrive and communities can prosper.



Violence Prevention Coalition

The Violence Prevention Coalition (VPC) is a public/private network of community-based organizations, individuals, institutions and agencies in the Greater Los Angeles area dedicated to working together to prevent violence using a public health approach.

The mission of the VPC is to be a powerful, unified voice to address the epidemic of violence and a resource for member organizations that are committed to developing healthy, safe communities, advocating for a prevention-based approach to reducing/eliminating violence, and creating healthy communities and assuring social equity.



Table of Contents

“Although overall crime continues to drop in Los Angeles, we continue to see gang violence as one of the serious threats facing our city.”

Mayor Antonio Villaraigosa, January 8, 2010

“If this can’t be a safe city, this can’t be a great city.”

L.A. Police Department Chief Charlie Beck,
January 7, 2011

Executive Summary	2
Citywide Public Safety Map	4
The Community Safety Scorecard: What Does It Tell Us?	5
Selected Scorecards	6
Scorecard Process: Comprehensive Violence Reduction Logic Model	12
Methodology	14
Recommendations	15
Conclusion	22
Appendix A: Community Safety Scorecards	23
Appendix B: Citywide List of Ranks & Grades	40
Appendix C: Correlation Table	46
Appendix D: Data Sources & Methodology Narrative	49

Executive Summary

“Crime is at historic lows, but the 300,000 children of L.A.’s hot zones still are not sufficiently safe. After you’ve reduced crime, what else has to happen to reduce trauma and produce safety for kids in the gang zones?”

Connie Rice, Founding Co-Director, Advancement Project

After nine consecutive years of record crime reduction, most Los Angeles neighborhoods enjoy unusually high safety. In 2007, Mayor Antonio Villaraigosa made the bold paradigm shift from “business as usual” to laser focus on gang zones and resource concentration into communities suffering the highest levels of violence. He also created the Office of Gang Reduction and Youth Development (GRYD), a single accountability structure charged with citywide violence prevention, gang intervention and seamless coordination with LAPD and neighborhood leaders. There is renewed hope in these communities. And there is undisputed proof that, as a result of these new policies, gang crime has dropped dramatically. In and around GRYD’s 2010 Summer Night Lights safe parks program, gang related homicide plunged by 57%.

The City’s historic reductions in crime would not have been possible without the Mayor’s change in policy direction, sustained focus on gang GRYD zones, strong support of the GRYD office, partnership with community leaders and the strong backing of former LAPD Chief Bill Bratton and current Chief Charlie Beck.

Nonetheless, citywide crime reduction does not mean that we have sufficiently reduced the risk factors that cause

trauma and violence in our poorest neighborhoods, where nearly 300,000 children still suffer the diseases that result from chronic exposure to debilitating community conditions. Ninety percent of children living in hot zones reported having witnessed or been a victim of felony level violence; a third test at war levels of PTSD; approximately a fifth suffer clinical depression; resulting in terrible health epidemics, such as obesity and diabetes.¹ If that were not enough, homicide is still the leading cause of premature death for young men from these neighborhoods.²

The Advancement Project’s Urban Peace and Healthy City programs, in collaboration with the Violence Prevention Coalition, present this Community Safety Scorecard tool to document the inequitable distribution of public safety and map the safety gaps among neighborhoods. **This Scorecard shows that crime reduction is an important beginning but it is not enough to create safety or reduce the PTSD of kids in gang zones still exposed to chronic violence and trauma.** This Scorecard shows what to expand and what to fix in each ZIP code to go beyond crime reduction to trauma reduction and real safety.

Nothing in this Community Safety Scorecard should be interpreted or used to diminish the progress made in the past several years or be used to argue against the City’s new policy and program direction that resulted in the historically low crime rates. In fact, the Scorecard provides further support for staying the course in concentrating the City’s investment into the highest need and, therefore, the highest priority communities. The Scorecard shows that even as we applaud the gains made in crime rate reduction, the communities that rank the lowest in the Scorecard need focus and attention in multiple areas in order to achieve sustainable safety.

The Community Safety Scorecard is an x-ray of safety indicators and community conditions for each ZIP code in the City of Los Angeles. It is a snapshot of

1 Stein, Bradley D., Jaycox, Lisa H., Kataoka, Sherly H., Wong, Marleen, Tu, Wenli, Elliott, Marc N., Fink, Arlene, “A Mental Health Intervention for School Children Exposed to Violence,” *Journal of the American Medical Association*, Vol. 290, No. 6, August 6, 2003, pp. 603-611.

2 Advancement Project’s Urban Peace program, *Call to Action: A Case for a Comprehensive Solution to LA’s Gang Violence Epidemic* Report. http://v3.advancementprojectca.org/sites/default/files/imce/p3_report.pdf

interrelated and interacting socio-economic risk and protective factors, crime and school performance data that contribute to or mitigate violence in a community. It pinpoints the safest ZIP codes as well as those where our reliance on the recent success in crime reduction has not been enough to deliver minimally adequate safety. In the safest neighborhoods, people walk their dogs at night. In unsafe neighborhoods, children often cannot walk to school safely, attend school without encountering gang recruiters, safely participate in afterschool activities, or walk home without fear. This Scorecard highlights where the community, and the public and private sectors, have the most work to do to deliver basic safety.

The Community Safety Scorecard offers data at the ZIP code level; and is the first to offer data by categorizing both protective and risk factors for violence, including school conditions. **No other scorecard presents community conditions at such a focused geographic level citywide.** This Scorecard measures and gives grades in the four categories of school conditions, risk factors, protective factors, and safety. Safety is largely informed by the former three community conditions. These grades indicate the status of safety-related conditions in the ZIP codes. These scores do not reflect the efforts of the police or the community on the ground, which may be extraordinary, but may point to insufficient measures to move the meter on safety for an entire ZIP code.

The main findings of this report can be found on page 10. They underscore the need for a public health focused, sustained, long-term effort to improve public safety in communities. The citywide safety score map reveals that public safety inequity in Los Angeles' communities exists. Despite the inequity, each community has a unique array of assets and risks, and thus any strategy implemented must be neighborhood based and build upon the resources that already exist in the area. The evidence also shows that when any one category of the Scorecard is at an "F" the rest of the categories are negatively affected, thus pointing to the need for coordinated action among all sectors. Based on this scoring technique, the scores presented for each ZIP code are relative to the scores of other ZIP codes in the City of Los Angeles and are not tied to any external scoring criterion.

The Community Safety Scorecard can also help illuminate for communities a path to sustainable violence reduction

solutions by indicating the specific community conditions that require the most urgent attention from both public and private sectors. With such knowledge, communities in Los Angeles can move closer to building partnerships and developing the comprehensive strategies necessary to reduce violence over the long term. Consequently, this report also makes a series of recommendations that enables the transformation of communities by improving their grade from failing (F, the bottom 20% of ZIP codes) to excellent (A, the top 20% of ZIP codes). These recommendations provide a sample roadmap on how to implement a comprehensive community-based violence reduction strategy that facilitates the coordination and collaboration of all sectors working together to achieve sustainable change.

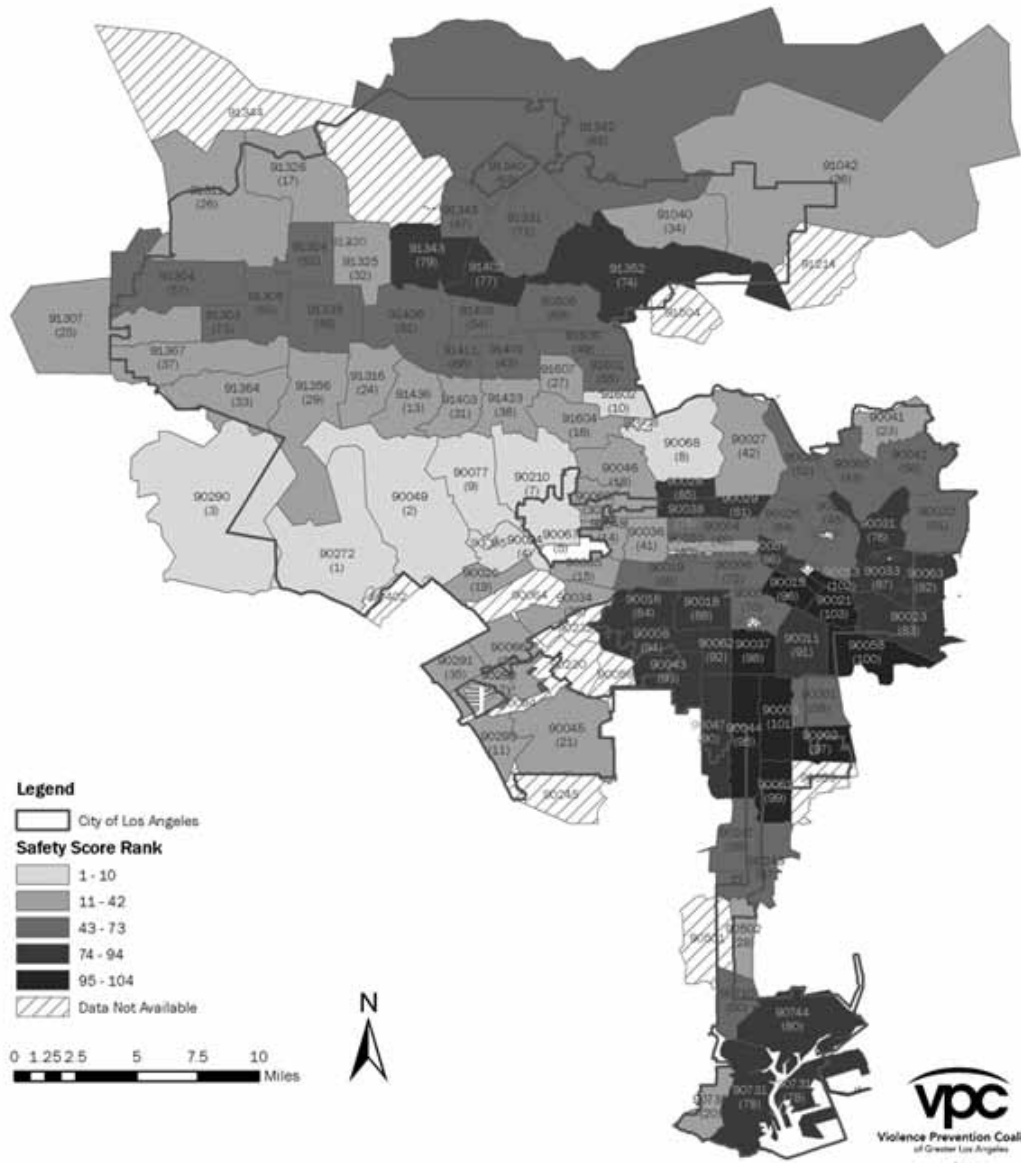
For future phases, the Scorecard will seek to use an external scoring criterion for each index category to better represent and track how each ZIP code's grade may improve or worsen in subsequent analyses. This study offers specific, violence-correlated data at the ZIP code level in a sufficiently robust design. If repeated, the Scorecard will serve as a meaningful benchmark for comprehensive violence reduction efforts. Furthermore, the Community Safety Scorecard will seek to include data that were unavailable for this first phase, including more data on protective factors like community cohesion, and deeper information on risk factors like domestic violence, children in foster care, post traumatic stress disorder, and depression. This data will also be more broadly available and useable online. The goal is to eventually build a full database of safety indicators that, indexed together, will give a three-dimensional assessment of neighborhood, family and individual conditions that correlate to safety. ■

“ Violence is not a normal way of life, but in Los Angeles, it is often viewed this way. Change is necessary to reduce the acceptance of violence as a fact of life, and this requires a community-wide commitment. ”

Billie Weiss, Founder, Violence Prevention Coalition of Greater Los Angeles

Citywide Public Safety Map

Safety Score Rank by ZIP code, City of Los Angeles



Map created by Healthy City, November 2010. Data classified to highlight the ten most safe ZIP codes in light grey and the ten least safe ZIP codes in dark grey. Ranks, identified in parentheses, based on Safety Score Index created using Gang Crime Rate (LAPD, 2007), Violent Crime Rate (LAPD, 2008), and Child Abuse Rate (DCFS, 2008). Geographic data from NAVTEQ, 2010.

The Community Safety Scorecard

What Does It Tell Us?

The Community Safety Scorecard provides a snapshot comparison of communities throughout the region. It provides a useful tool for stakeholders seeking to understand the diverse neighborhood based needs in communities across Los Angeles and therefore the strategies needed. **Importantly, the Community Safety Scorecard shows in no uncertain terms the kind of disparity that exists in Los Angeles.** By mining multiple data points based on Urban Peace’s findings from over 16 comprehensive needs assessments, the Scorecard helps identify pressing solutions to community violence by lifting up the most urgent indicators in each of those areas.

The citywide map on page 4 (and on back cover) provides a general view of the regional state of community safety. It is evident that the communities that are least safe are not spread out across the City, but are geographically concentrated, indicating these communities are lacking public safety in isolation from the rest of the City. The region’s least safe areas are located in the south-eastern parts of the City, while the safest areas are those in the north and western parts of the City.

Individual Community Safety Scorecards provide greater detail as to what issues pose barriers to increasing safety in high violence neighborhoods. The Scorecards **contain an index of a number of indicators in safety, school conditions, risk and protective factors by ZIP code. Each ZIP code is then given a community grade from A to F, based on its relation to other ZIP codes in the region. The Scorecard ranking translates, for example, into “most safe” to “least safe”.**

Grades are obtained using an aggregate of several socioeconomic categories and indicators, outlined on the right.

In the following pages you will find samples of the Community Safety Scorecards with the ZIP codes that scored the highest and the lowest rankings in all the categories. This underscores the disparity that exists between Los Angeles neighborhoods.³

³ See Appendix A for a look at more of the “best” and “worst” Community Safety Scorecards and see Appendix B for a complete look at the Ranks & Grades of all ZIP codes.

Data Indicators

Safety

- Gang Related Crime
- Violent Crime
- Child Abuse

School

- High School Academic Performance Index (API)
- High School Truancy
- Middle School API
- Middle School Truancy
- High School Graduation Rate

Risk Factors

- Percent Families in Poverty
- Percent Unemployment
- Percent Single Parent Families
- Percent High School Students Scoring Below Basic in English
- Percent Middle School Students Scoring Below Basic in English

Protective Factors

- Violence Prevention Services Rate
- Youth Violence Prevention Nonprofit Revenue per Capita
- Percent High School Teachers with Full Credentials
- Percent Middle School Teachers with Full Credentials
- Percent Active Voting Population

90272

Scorecard

ZIP Code 90272 encompasses Will Rogers State Historic Park and the neighborhood of Pacific Palisades. It is bordered by the Pacific Ocean to the south and the City of Santa Monica to the east.

Safety

On a scale from A-F, with "A" being a safe neighborhood

Gang Related Crime Rate ¹	Violent Crime Rate ²	Child Abuse Rate ³
0.19 per 1,000 residents	1.02 per 1,000 residents	0.19 per 1,000 children

A

Rank (out of 104 in City of LA) 1st Safest	2.83 per 1,000 residents City of LA	5.60 per 1,000 residents City of LA	9.78 per 1,000 children City of LA
--	--	--	---------------------------------------

School

On a scale from A-F, with "A" having good schools

797 High School API ⁴	12.62% High School Truancy Rate ⁵	833 Middle School API ⁶	0.14% Middle School Truancy Rate ⁷	85.6% High School Graduation Rate ⁸
--	--	--	---	--

A

Rank (out of 104 in City of LA) 2nd Best	618 LAUSD High School Average	11.14% LAUSD High School Average	683 LAUSD Middle School Average	4.57% LAUSD Middle School Average	72.4% LAUSD High School Average
--	---	--	---	---	---

Risk Factors

On a scale from A-F, with "A" having few risk factors

2.07% Families in Poverty ⁹	2.98% Unemployment ¹⁰	17.26% Single Parent Families ¹¹	10.67% High School students scoring below basic in English ¹²	9.00% Middle School students scoring below basic in English ¹³
--	--	---	--	---

A

Rank (out of 104 in City of LA) 1st Least Risky	15.26% City of LA	7.47% City of LA	38.25% City of LA	42.74% LAUSD High School Average	29.50% LAUSD Middle School Average
---	-----------------------------	----------------------------	-----------------------------	--	--

Protective Factors

On a scale from A-F, with "A" having many protective factors

0.40 per 1,000 Residents Violence Prevention Services ¹⁴	\$707 per capita Youth Violence Prevention Nonprofit Revenue ¹⁵	89% High School Teachers with Full Credentials ¹⁶	95% Middle School Teachers with Full Credentials ¹⁷	88.13% Active Voting Age Population ¹⁸
--	---	--	--	---

A

Rank (out of 104 in City of LA) 4th Most Protected	1.17 per 1,000 Residents City of LA	\$1,341 per capita City of LA	81% LAUSD High School Average	81% LAUSD Middle School Average	38.49% City of LA
--	--	--	---	---	-----------------------------

Data Sources:

Refer to appendix for all source and calculation information

90002

Scorecard

ZIP Code 90002 is located partly in the City of Los Angeles and partly in the City of South Gate. It is bordered by Firestone Boulevard to the north, 107th Street to the south, Avalon Boulevard to the west, and Alameda Street to the east.

Safety

On a scale from A-F, with "A" being a safe neighborhood

Gang Related Crime Rate ¹	Violent Crime Rate ²	Child Abuse Rate ³
4.37 per 1,000 residents	9.81 per 1,000 residents	21.85 per 1,000 children

F

Rank (out of 104 in City of LA) 97th Safest	2.83 per 1,000 residents City of LA	5.60 per 1,000 residents City of LA	9.78 per 1,000 children City of LA
---	--	--	---------------------------------------

School

On a scale from A-F, with "A" having good schools

543 High School API ⁴	0.00% High School Truancy Rate ⁵	536 Middle School API ⁶	54.46% Middle School Truancy Rate ⁷	60.2% High School Graduation Rate ⁸
----------------------------------	---	------------------------------------	--	--

F

Rank (out of 104 in City of LA) 104th Best	618 LAUSD High School Average	11.14% LAUSD High School Average	683 LAUSD Middle School Average	4.57% LAUSD Middle School Average	72.4% LAUSD High School Average
--	-------------------------------	----------------------------------	---------------------------------	-----------------------------------	---------------------------------

Risk Factors

On a scale from A-F, with "A" having few risk factors

33.68% Families in Poverty ⁹	15.19% Unemployment ¹⁰	50.90% Single Parent Families ¹¹	56.00% High School students scoring below basic in English ¹²	51.00% Middle School students scoring below basic in English ¹³
---	-----------------------------------	---	--	--

F

Rank (out of 104 in City of LA) 100th Least Risky	15.26% City of LA	7.47% City of LA	38.25% City of LA	42.74% LAUSD High School Average	29.50% LAUSD Middle School Average
---	-------------------	------------------	-------------------	----------------------------------	------------------------------------

Protective Factors

On a scale from A-F, with "A" having many protective factors

1.43 per 1,000 Residents Violence Prevention Services ¹⁴	\$23 per capita Youth Violence Prevention Nonprofit Revenue ¹⁵	72% High School Teachers with Full Credentials ¹⁶	75% Middle School Teachers with Full Credentials ¹⁷	23.24% Active Voting Age Population ¹⁸
---	---	--	--	---

F

Rank (out of 104 in City of LA) 103rd Most Protected	1.17 per 1,000 Residents City of LA	\$1,341 per capita City of LA	81% LAUSD High School Average	81% LAUSD Middle School Average	38.49% City of LA
--	-------------------------------------	-------------------------------	-------------------------------	---------------------------------	-------------------

Data Sources:

Refer to appendix for all source and calculation information

90049

Scorecard

ZIP Code 90049 is located in the west part of the City of Los Angeles. It is bordered approximately by Mullholland Drive to the North, Wilshire Boulevard to the south, Will State Rogers Historic Park to the west, and Veteran Avenue to the east.

Safety

On a scale from A-F, with "A" being a safe neighborhood

Gang Related Crime Rate ¹	Violent Crime Rate ²	Child Abuse Rate ³
0.14 per 1,000 residents	0.88 per 1,000 residents	0.40 per 1,000 children

A

Rank (out of 104 in City of LA) 2nd Safest	2.83 per 1,000 residents City of LA	5.60 per 1,000 residents City of LA	9.78 per 1,000 children City of LA
--	--	--	---------------------------------------

School

On a scale from A-F, with "A" having good schools

797 High School API ⁴	12.62% High School Truancy Rate ⁵	833 Middle School API ⁶	0.14% Middle School Truancy Rate ⁷	85.6% High School Graduation Rate ⁸
----------------------------------	--	------------------------------------	---	--

A

Rank (out of 104 in City of LA) 2nd Best	618 LAUSD High School Average	11.14% LAUSD High School Average	683 LAUSD Middle School Average	4.57% LAUSD Middle School Average	72.4% LAUSD High School Average
--	-------------------------------	----------------------------------	---------------------------------	-----------------------------------	---------------------------------

Risk Factors

On a scale from A-F, with "A" having few risk factors

2.67% Families in Poverty ⁹	2.86% Unemployment ¹⁰	21.11% Single Parent Families ¹¹	10.67% High School students scoring below basic in English ¹²	9.00% Middle School students scoring below basic in English ¹³
--	----------------------------------	---	--	---

A

Rank (out of 104 in City of LA) 3rd Least Risky	15.26% City of LA	7.47% City of LA	38.25% City of LA	42.74% LAUSD High School Average	29.50% LAUSD Middle School Average
---	-------------------	------------------	-------------------	----------------------------------	------------------------------------

Protective Factors

On a scale from A-F, with "A" having many protective factors

0.34 per 1,000 Residents Violence Prevention Services ¹⁴	\$2,471 per capita Youth Violence Prevention Nonprofit Revenue ¹⁵	89% High School Teachers with Full Credentials ¹⁶	95% Middle School Teachers with Full Credentials ¹⁷	68.04% Active Voting Age Population ¹⁸
---	--	--	--	---

A

Rank (out of 104 in City of LA) 15th Most Protected	1.17 per 1,000 Residents City of LA	\$1,341 per capita City of LA	81% LAUSD High School Average	81% LAUSD Middle School Average	38.49% City of LA
---	-------------------------------------	-------------------------------	-------------------------------	---------------------------------	-------------------

Data Sources:

Refer to appendix for all source and calculation information

90044

Scorecard

ZIP Code 90044 is located northwest of the 110 and 105 Interstate interchange. It is bordered by Slauson Avenue to the north, El Segundo Boulevard to the south, Normandie Avenue to the west, and Figueroa Street to the east.

Safety

On a scale from A-F, with "A" being a safe neighborhood

Gang Related Crime Rate ¹	Violent Crime Rate ²	Child Abuse Rate ³
5.13 per 1,000 residents	9.61 per 1,000 residents	19.36 per 1,000 children

F

Rank (out of 104 in City of LA) 95th Safest	2.83 per 1,000 residents City of LA	5.60 per 1,000 residents City of LA	9.78 per 1,000 children City of LA
---	--	--	---------------------------------------

School

On a scale from A-F, with "A" having good schools

No Valid API ⁴	11.75% High School Truancy Rate ⁵	518 Middle School API ⁶	1.15% Middle School Truancy Rate ⁷	52.9% High School Graduation Rate ⁸
---------------------------	--	------------------------------------	---	--

F

Rank (out of 104 in City of LA) 90th Best	618 LAUSD High School Average	11.14% LAUSD High School Average	683 LAUSD Middle School Average	4.57% LAUSD Middle School Average	72.4% LAUSD High School Average
---	-------------------------------	----------------------------------	---------------------------------	-----------------------------------	---------------------------------

Risk Factors

On a scale from A-F, with "A" having few risk factors

30.13% Families in Poverty ⁹	12.12% Unemployment ¹⁰	55.40% Single Parent Families ¹¹	57.67% High School students scoring below basic in English ¹²	56.67% Middle School students scoring below basic in English ¹³
---	-----------------------------------	---	--	--

F

Rank (out of 104 in City of LA) 101st Least Risky	15.26% City of LA	7.47% City of LA	38.25% City of LA	42.74% LAUSD High School Average	29.50% LAUSD Middle School Average
---	-------------------	------------------	-------------------	----------------------------------	------------------------------------

Protective Factors

On a scale from A-F, with "A" having many protective factors

1.02 per 1,000 Residents Violence Prevention Services ¹⁴	\$50 per capita Youth Violence Prevention Nonprofit Revenue ¹⁵	76% High School Teachers with Full Credentials ¹⁶	88% Middle School Teachers with Full Credentials ¹⁷	34.22% Active Voting Age Population ¹⁸
---	---	--	--	---

F

Rank (out of 104 in City of LA) 97th Most Protected	1.17 per 1,000 Residents City of LA	\$1,341 per capita City of LA	81% LAUSD High School Average	81% LAUSD Middle School Average	38.49% City of LA
---	-------------------------------------	-------------------------------	-------------------------------	---------------------------------	-------------------

Data Sources:

Refer to appendix for all source and calculation information

The research that informs the Scorecards makes clear that school conditions, risk factors, and protective factors are all closely interrelated and jointly inform the level of violence or safety in a community.

Cross-cutting findings include:

When any one category of the Scorecard is at an “F” the rest of the categories are also negatively affected. For example, ZIP code 90068 has an “A” in safety, but an “F” in the school conditions scale, and a “B” and “C” rating in risk and protective factors, based on the relative grading methodology used.⁴

Many of the ZIP codes graded “least safe” are located across multiple jurisdictions, i.e. cross-city areas, unincorporated County areas, or multiple City Council districts. This is evident in the ZIP codes of 90058, 90002, and 90061.

ZIP codes surrounding the least safe areas seem to be at the tipping point of safety and can easily become “least safe” areas as well, demonstrating these surrounding communities also need attention and resources. For example, ZIP code 90007 ranks in the middle range of safety, almost falling into the least safe category, probably given the fact that it is located between ZIP codes 90015 and 90037—two ZIP codes ranked among the top ten “least safe” ZIP codes in the City.

There were also some anomalous ZIP codes, such as 90014, 90021, 90013, and 90058 where the protective factors were high either at an “A” “B” or “C” and thus the rest of the categories would be expected to score at a similar ranking, but they were actually at a much lower rank of a “D” or “F”. A closer look at these ZIP codes shows how investments in a single community sector are not enough to raise outcomes in the rest of the sectors. ***This is consistent with the idea that one factor alone cannot solely sustain a safe community; therefore investing in only one sector, be it schools, risk, or protective factors, may not be enough to sustainably lower violence.***

A high number of risk factors such as poverty and unemployment were correlated strongly to a lack of protective factors, inadequate school conditions and ultimately low levels of safety; examples of this can be found in practically every “least safe” ZIP code. Such concentrated disadvantage highlights the historic lack of investment for some parts of the City of Los Angeles.

⁴ See Community Safety Scorecard for ZIP code 90068 on page 29.

Based on a correlation analysis, there were also other specific strong relationships that exist between indicators that are elements of the overall category scores; essentially, the following correlations are overarching patterns in all the ZIP codes:⁵

- A strong relationship exists between high rates of poverty and high percentages of single parent families.
- A strong correlation exists between high poverty rates, high single parent families and high gang crime.
- A strong relationship exists between high rates of child abuse and high rates of unemployment.
- A strong correlation exists between high rates of child abuse and high rates of gang and violent crime.
- A strong correlation exists between high rates of poverty and high percentages of high school students scoring below basic in English.
- A strong correlation exists between high unemployment and high rates of gang and violent crime.
- A strong correlation exists between high rates of gang crime and high percentages of high school students scoring below basic in English.
- A strong correlation exists between high rates of violence prevention services per 1,000 residents and high unemployment rates.
- A strong correlation also exists between high rates of violence prevention services per 1,000 residents and violent and gang crime.
- It is important to remember here that correlation tests do not indicate causality; rather correlation tests reflect a relationship that exists between two indicators. For example, in ZIP code 90058 we can see that there is a high number of protective factors, yet the safety score is an “F”. This could be due to a low score in both risk factors and school conditions, indicating that protective factors cannot act alone to raise the safety score.

It is evident from these findings that the scale and scope of community level risk factors is closely linked to a need for place-based comprehensive strategies to reduce violence. Successful strategies in communities graded “least safe” must encompass a comprehensive, multi-sector, neighborhood-based approach and include child development, economic development, and community development models that address the major underlying drivers of violence.

The Scorecard highlights key areas of regional disparity, thereby providing community stakeholders a way to objectively assess whether public and private funding is commensurate to the need. The goal of the Scorecard is to become an ongoing periodic assessment of public safety over time, which can be used to advocate for better and wiser allocation of private and public monies. Without attention to the infrastructure needed to support sustained economic, social, and safe growth citywide, the Scorecard shows how Los Angeles will continue to fall behind other metropolitan cities in providing equitably for all its citizens. ■

⁵ Refer to Full Correlation table in Appendix C.

Scorecard Process

Comprehensive Violence Reduction Logic Model

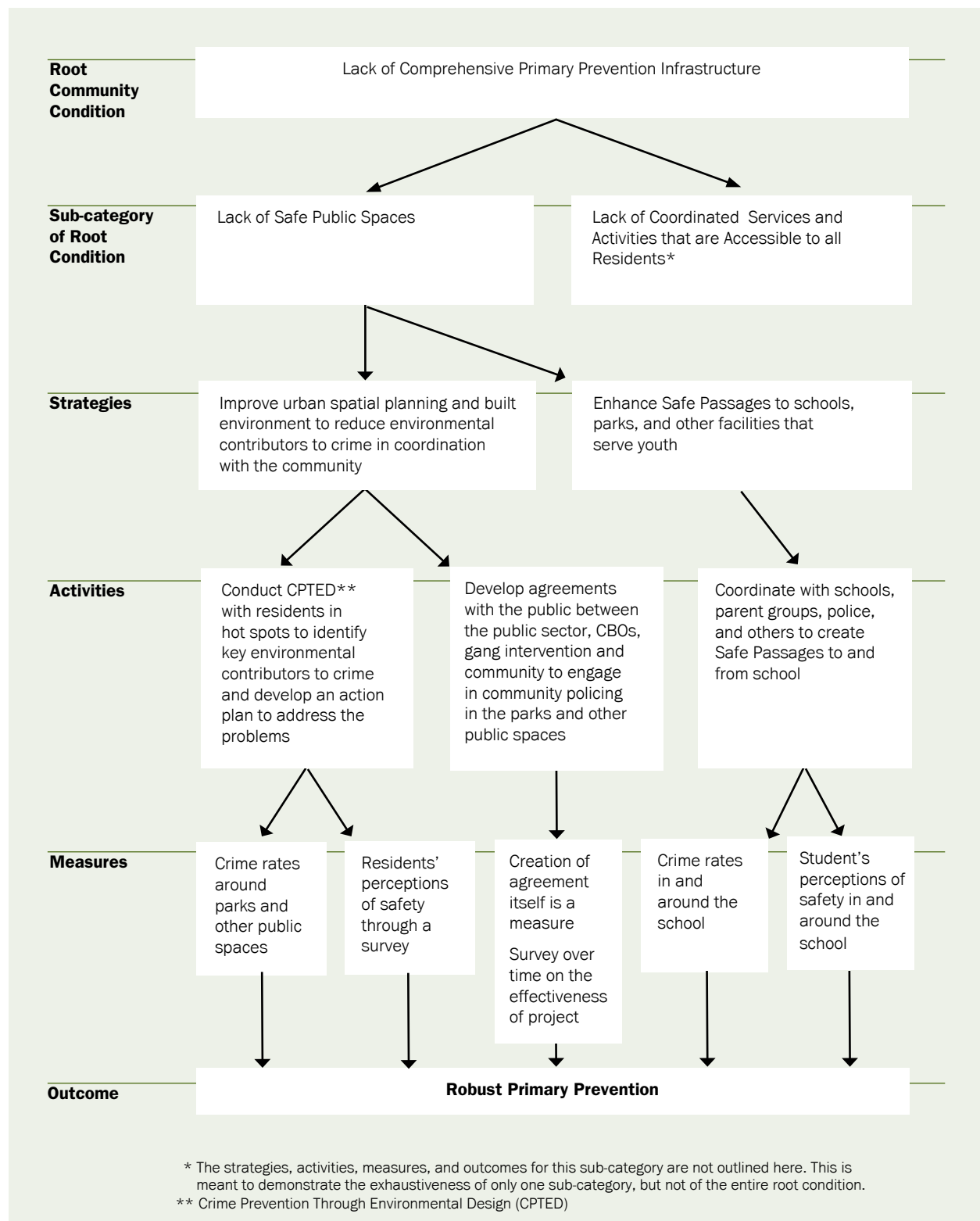
The Community Safety Scorecard was created through research based on Urban Peace's Comprehensive Violence Reduction Logic Model. The Logic Model is a comprehensive document that catalogs the root conditions of gang violence in Los Angeles, documents the latest evidence-based strategies to address those root conditions, highlights research-based evaluation of which indicators could best measure the success of those strategies, and lists the data sources from which those indicators could be or should be attained. The Advancement Project conducted an exhaustive research process that ultimately identified 10 root community conditions that allow gang violence to take root, flourish, and expand.

At its completion, the Comprehensive Violence Reduction Logic Model identified hundreds of strategies, activities, indicators and data points. The 10 root conditions are listed below.

- 1 Lack of Targeted Suppression that Follows a Community Policing Model**
Including: Overbroad Suppression; Lack of Positive Community Relations; Lack of Strategic Partnerships
- 2 Lack of Comprehensive Primary Prevention Infrastructure**
Including: Lack of Safe Public Spaces; Lack of Coordinated Services and Activities that are Accessible to all Residents
- 3 Lack of Community Economic Investment, Workforce Development and Family Economic Success**
Including: Lack of a Strong Business Infrastructure; Lack of Local, Well-paying Jobs and Job Training Resources; Lack of Access to Services that Promote Family Economic Success

- 4 Lack of Effective Re-entry Strategies and Support**
Including: Lack of Comprehensive Transition Planning Including a Family Engagement Component; Lack of Job Skills Training and Workforce Participation Opportunities; Lack of Access to Quality Health and Mental Health Care Services
- 5 Early Academic Failure and Lack of School Attachment**
Including: Lack of School Safety; Lack of School-Based Services; Under-resourced and Overcrowded Schools
- 6 Family Isolation and Lack of Access to Support Structures**
Including: Lack of Access and Availability of Family Support Services; Lack of a Coordinated Service Delivery Model Targeted at At-risk/High-risk Families; Cultural Barriers for Immigrant and Monolingual Parents
- 7 Lack of Community Cohesion to Improve Public Safety**
Including: Lack of Trust and Communication among Residents; Few Organized Social Institutions and Civic Engagement Events
- 8 Inadequate Government Coordination and Accountability**
Including: Lack of Data Driven and Data Sharing Policies; Lack of Multi-jurisdictional Coordination; Lack of Accountability; Lack of Equitable Funding
- 9 Poor Access to Quality Health and Mental Health Care Services**
Including: Lack of Access to Quality Health and Mental Health Services; Lack of Services for At-Risk and High-Risk Residents
- 10 High Rates of Gang Violence**
Including: Normalization of Violence

A visual representation of the logic model process for only one root community condition of violence



Literature Review and Evaluation

Methodology

Extensive research for the Logic Model generated over 1,400 potential indicators; many of which could not be used because of the lack of availability of representative data. Once available datasets were identified for each indicator at the ZIP code level, a correlation analysis was done to identify which school, protective, and risk factors were most strongly related to safety indicators. Finally, from this list, the researchers from Healthy City, Urban Peace, and The Violence Prevention Coalition of Greater Los Angeles selected the most relevant indicators for the purpose of the Community Safety Scorecard.

The indicators were grouped into four broad categories: safety, school, risk factors and protective factors. Each category of the Scorecard had a minimum of three indicators that were used to determine its final grade and rank. For example, for the safety category, indicators used included: gang-related crime rate per 1,000 residents, violent crime rate per 1,000 residents and child abuse rate per 1,000 children. These indicators were indexed to create a standardized score for each ZIP code. The factors were weighed equally to construct the final index score since previous research did not support weighting

one indicator more than another. The index score was then ranked among all City of Los Angeles ZIP codes and assigned the corresponding letter grade, with an A grade for ZIP codes in the top 20%; a B for ZIP codes falling into the second quintile; a C for the third; and D and F for the fourth and fifth quintiles, respectively. Based on this technique, the grades presented for each ZIP code are relative to the grades of the other ZIP codes in the City of Los Angeles and are not tied to any external scoring criterion. If a ZIP code was missing a value for one of the indicators used in the index, the score was calculated using the remaining indicators, ZIP codes where this was the case are noted with an asterisk in the Ranks & Grades tables.^{6,7} ■

⁶ For a complete list of citywide Ranks & Grades, see Appendix B.

⁷ To access the extended Data Sources & Methodology narrative, see Appendix D.

Recommendations

This Community Safety Scorecard report highlights the public safety disparities that exist in the City of Los Angeles, while at the same time underscoring the need for collective action in reducing entrenched, community level violence. In essence, the recommendations call for a sustained, school-centered, asset and neighborhood-based, comprehensive violence reduction effort that is implemented in coordination with all public and private sectors and that works together with local community stakeholders.

For ZIP codes which received a C, D, or F in the category of safety, it is probable that the level of violence entrenchment in the community necessitates the implementation of the comprehensive violence reduction strategy. Communities with a score of A or B in the category of safety may not necessarily need to fully implement a comprehensive violence reduction strategy, but can nonetheless take elements from the model and implement them as needed. The following are some critical steps that all communities should take in order to assess what needs to happen to reduce violence. For the C, D, and F communities a basic compilation of the elements of a comprehensive strategy are outlined below.⁸

All Communities Should Complete a Comprehensive Community Needs Assessment

This Community Safety Scorecard provides a snapshot of the conditions in the community, but a more exhaustive community needs assessment should be done in order to fully assess what are the accumulated risk and protective factors for violence and gang entrenchment. **A comprehensive community needs assessment** is used to better understand the demographic and

socioeconomic conditions, as well as the violence dynamics in the area. This assessment should combine statistical data analysis and community engaged research to understand and outline the root community conditions of violence in the area, as well as identify the assets and resources that exist in the community. A comprehensive needs assessment should form the foundation of a neighborhood-based comprehensive violence reduction strategy.⁹

Understand the Community Violence Reduction Model

After the completion of the needs assessment, communities should seek to understand the elements of a comprehensive violence reduction strategy. The following recommendations list attempts to describe the many elements of a comprehensive violence reduction strategy. These elements make up the basis of a public health approach. The sample strategies listed are by no means exhaustive; they are simply an attempt to describe the span and complexity of strategies that need to be implemented in order to fully, meaningfully, and effectively address the root conditions of violence. Some of the strategies listed would also require the establishment of a data collection advocacy platform, given that some of the data necessary to measure progress in specific strategies may not currently be collected, or available. Nonetheless, all recommendations outlined are vital to instituting a comprehensive violence prevention and reduction strategy. The recommendations list also provides a basic definition of each element and outlines sample strategies that could be implemented. Only until the five elements and the three guiding principles in the following pages are in place will there be a reduction in the conditions that sustain violence.

⁸ For a more in depth analysis of the model, please refer to Advancement Project's Urban Peace program, *Call to Action: A Case for a Comprehensive Solution to LA's Gang Violence Epidemic* Report. http://v3.advancementprojectca.org/sites/default/files/imce/p3_report.pdf

⁹ For more information on how to conduct a Comprehensive Community Needs Assessment, please refer to Advancement Project's Urban Peace program's framework for implementing a comprehensive violence reduction strategy. <http://v3.advancementprojectca.org/?q=ap-ca-urban-peace>

Create a Community-Based Violence Reduction Action Plan

It is important that all sectors in a community, including the public and private sector, community-based organizations, schools, law enforcement, service providers, and community members understand the model. Once all sectors come to a consensus about the conditions in the community and understand the model, everyone needs to work together to collectively draft and implement a **Community-Based Violence Reduction Action Plan**. This action plan should be informed by the community needs assessment and the elements of the model, and should address the most salient root community conditions in the ZIP code.¹⁰ A feasible plan should incorporate measurable process and outcome objectives so that progress can be monitored and changes can be made as necessary to ensure that the work is moving in the desired direction. A comprehensive violence reduction strategy should focus on primary prevention, intervention, suppression, reentry, and community investment. All and any strategies should be jointly planned and highly coordinated; only then can communities counter the conditions and risk factors that spawn community violence.¹¹

As communities move through the implementation of the public health model, it is important to consider reaching and maintaining a basic level of safety – a “threshold

If this “threshold of safety” is not obtained, communities must continue to monitor, evaluate, and buttress the strategies. The public health approach encourages focus on containing the immediate “violence outbreaks” before attempting broader community-wide treatments, to ensure outcomes achieved through the interventions are sustainable over the long term. Community strategies must be responsive to real time violence dynamics in a community, during the treatment process.¹²

level of safety” – that will ensure the comprehensive violence reduction strategy is sustainable over time.

The recommendations that follow have been divided up into eight overarching components of a comprehensive approach, followed by a general definition, and recommended sample strategies. Most of the recommendations are specific to certain sectors, but nonetheless all sectors should be involved in every aspect for the purposes of keeping each other accountable and to vet every strategy and activity that will get implemented. Community safety goes beyond law enforcement. While police can adopt alternative policing methods, their efforts can have the greatest impact when schools also prioritize safety and academic success for at-risk youth, service providers coordinate to provide a continuum of support, and parents and youth participate in developing and implementing a neighborhood specific safety action plan. Communities with entrenched violence need each sector to fulfill their role within the model, and together create the mechanism for an effectively functioning comprehensive, wraparound, violence reduction strategy.

Reaching a “threshold of community safety”

The goal for communities rated “least safe” is to implement comprehensive strategies that will help sustain a basic level of safety that allows for the implementation of other broader prevention and intervention strategies.

10 To review the root community conditions, please refer to the “Scorecard Process: Comprehensive Violence Reduction Logic Model” section on page 12.

11 For more information on how to organize community stakeholders to come together to build a Community-Based Violence Reduction Action Plan, please refer to Advancement Project’s Urban Peace program’s framework for implementing a comprehensive violence reduction strategy. <http://v3.advancementprojectca.org/?q=ap-ca-urban-peace>.

12 For more information please refer to Advancement Project’s Urban Peace program’s framework for implementing a comprehensive violence reduction strategy. <http://v3.advancementprojectca.org/?q=ap-ca-urban-peace>

Comprehensive Violence Reduction Strategy Elements:

1 Equitable Distribution of Resources

Governments often fail to deliver comprehensive solutions to the challenges with which violence ridden and socio-economically disadvantaged areas must contend. Within these communities, there is often inadequate government coordination and accountability that prevents a sustained and effective implementation of policies that will support healthy families. Equally important, the government must provide a balanced investment that meets the scale and scope of the need in communities to reduce conditions that sustain violence.

Recommended Sample Strategies

- Restore and increase funding for basic safety net services and programs to families and schools in the hot zones; funding should include services in the entire spectrum of prevention, intervention, reentry, community capacity development, neighborhood investment, high quality cradle to career education, mental health services, and healthy food access, among others.
- Launch an initiative that will provide a permanent stream of funding for wraparound safety activities, and that includes funding for non-profit agencies, community policing resources and job development, among other activities that promote safety.
- Ensure effective and equitable distribution of public resources that reflects basic, adequate safety in all communities.
- Conduct evaluation based on an action or strategic plan with measurable objectives and outcomes that can be monitored to assess process and outcomes of the equitable distribution of resources.
- Increase investment in gang focused prevention and intervention programs that are commensurate to the need in the area.
- Ensure coordination and collaboration of private, public, academic, non-profit, community-based, and faith-based sectors in assuring the equitable distribution of resources among communities and among prevention, intervention, suppression, and reentry programming.

2 Primary Prevention Infrastructure

A “safety net” in the form of a robust, comprehensive primary prevention infrastructure is a vital element necessary for the successful development of children, youth, and their families. Elements of a primary prevention infrastructure include: safe and useable public spaces like parks and schools, quality affordable housing, quality early child care and education, access to public transportation, sports and recreation opportunities, and a strong service infrastructure that is accessible to all residents.

Recommended Sample Strategies

- Counter the culture of violence, and initiate norm change strategy through a prevention infrastructure.
- Ensure coordination and collaboration between the private and public sectors on primary prevention.
- Focus on both community level conditions and individual level conditions.
- Conduct evaluation based on delineated objectives in the Action Plan and monitor progress and achievement of goals, including economic development goals and educational goals.
- Build a robust Multi-Sector Violence Reduction Community Collaborative that includes representatives from the public and private sectors, community organizations, law enforcement, schools, and community members. Work to collectively come up with an Action Plan that will guide all coordinated work to successfully reduce violence and to ensure stable funding streams for the violence reduction project.

Primary Prevention Infrastructure (continued)

- Create a school-centered strategy, given the potential to reach large portions of the community.
- Create community leadership training and skills development programs to build the capacity of community members to engage with the public sector through local schools and/or local community organizations.
- Work to increase community economic investment, workforce development, and family economic independence; ensure that strategies implemented create sustainable economic success.
- Enhance capacity of local CBO's to increase primary prevention programs, service coordination and interagency collaboration within the ZIP code.
- Enhance public sector coordination of services and activities so that they are accessible to all residents. Focus on helping to maximize services for families of high-risk children and youth.
- Increase investment in gang focused prevention and intervention programs that are commensurate to the need in the area.
- Ensure coordination and collaboration of private, public, academic, non-profit, community-based, and faith-based sectors on the creation of a primary prevention infrastructure.

3 Intervention

In communities deeply entrenched with violence, hard-core gang intervention professionals can reach out and connect with youth and adults who claim gang membership, and with those who have close friendships or associations with current or former gang members. Hard-core gang intervention professionals can potentially negotiate with high-risk individuals and gangs to decrease violence, negotiate ceasefires, respond to control rumors that can cause retaliatory shootings, intervene in crises, etc.

Recommended Sample Strategies

- Counter the culture of violence, and initiate norm change strategy through intervention services.
- Conduct evaluation based on an action or strategic plan with measurable objectives and outcomes that can be monitored to assess process and outcomes of the intervention strategies.
- Monitor the progress of investment in the field of intervention and the number of trained intervention professionals.
- Substantially increase investment in improved training and oversight for gang intervention programs.
- Link intervention workers to employment and other referral services for their clients.
- Enhance public sector coordination of services and activities so that they are accessible to all residents. The focus should be on helping to maximize services for families of high-risk children and youth.
- Provide services to youth through formal partnerships with violence prevention services, mental health services, drug and alcohol treatment, services and other service providers.
- Increase investment in gang focused prevention and intervention programs that are commensurate to the need in the area.
- Ensure coordination and collaboration of private, public, academic, non-profit, community-based, and faith-based sectors, on the development of a strong intervention infrastructure.

4 Targeted Suppression that Follows a Community Policing Model

Too often overbroad suppression leads to the targeting of an entire community, to disproportionate minority contact, and to strained community relations, which further erodes public trust and the ability of law enforcement to effectively deter and investigate crime and promote safety. Implementing a problem solving, community policing model in high crime, urban neighborhoods is vital to creating the public trust and partnership necessary for reducing violence.

Recommended Sample Strategies

- Counter the culture of overbroad suppression, and initiate norm change strategy through the implementation of a community policing model.
- Conduct evaluation based on the progress of the development and implementation of a targeted suppression, community policing model.
- Work with professional gang intervention workers to intervene in gang related conflicts. Interventionists will help ensure the level of violence is down, and the area is safe enough for other types of intervention.
- Officers must be trained and fluent in community policing; LAPD and LASD will need to accelerate the transition to problem solving community policing, and develop the capacity to work with community members.
- Local police entities must seek coordination with other law enforcement partners to ensure targeted policing and suppression strategies.
- Provide alternatives to arrest for youth, minors and first time offenders through formal partnerships with gang intervention, violence prevention services, mental health services, drug and alcohol treatment services, and other service providers.
- Law enforcement entities, particularly LAPD and LASD, must work to eliminate overbroad suppression tactics that target an entire community, and instead develop strategies that will complement comprehensive neighborhood-based prevention and intervention strategies.
- Ensure coordination and collaboration of private, public, academic, non-profit, community-based, and faith-based sectors on the implementation of a community policing strategy.

5 Reentry

High violence communities usually have high concentrations of formerly incarcerated and system-involved youth and adults. This population is often unprepared to fully reintegrate into the fabric of the community. A lack of coordinated reentry resources puts these returning residents at risks of re-offending. The reintegration of this population requires coordination between the public sector, community based organizations, faith-based organizations and other stakeholders in order to link them to a support system in the community.

Recommended Sample Strategies

- Counter the culture of recidivism and initiate norm change strategy through the implementation of comprehensive transition planning prior to release from juvenile hall or prison.
- Conduct evaluation based on an action or strategic plan with measurable objectives and outcomes that can be monitored to assess process and outcomes of the reentry strategies.
- Build and strengthen holistic reentry services and services that can provide wraparound treatment for high-risk families. Provide individualized transition planning and case management from community based agencies in collaboration with other relevant entities.
- Ensure coordination and collaboration of private, public, academic, non-profit, community-based, and faith-based sectors on the implementation of a robust reentry system for juveniles and adults.

Comprehensive Violence Reduction Strategy Guiding Principles:

1 Community-Based & Culturally Competent Service Delivery

Families in high poverty, high violence areas are often isolated from a support infrastructure because of the lack of accessibility and availability of such services. Families face a multitude of challenges such as language barriers and unprotected legal status. For these reasons any initiative must be community based, honor the existing leadership and assets of the community and must deliver culturally competent services.

Recommended Sample Strategies

- Counter the culture of a “cookie cutter” approach to delivery of services, by advocating for outreach to isolated families.
- Invest in existing community leadership infrastructure and capacity building.
- Conduct evaluation based on an action or strategic plan with measurable objectives and outcomes that can be monitored to assess process and outcomes of the delivery of quality, culturally competent services.
- Create community leadership training and skills development programs to build the capacity of community members to engage with the public sector through local schools and/or local community organizations.
- Work to increase community cohesion to improve safety by building trust and communication among residents, especially in multiracial communities.
- Enhance public sector coordination of services and activities so that they are accessible to all residents. Focus on helping to maximize services for families of high-risk children and youth.
- Ensure coordination and collaboration of private, public, academic, non-profit, community-based, and faith-based sectors on the implementation of a community-based and culturally competent service delivery model that reaches all isolated communities in the ZIP code.

2 Built-In Accountability

Initiatives without accountability measures fail. Any initiative must have built in accountability measures that will ensure the initiative is regularly evaluated and that it is working. Both the public sector and the community must hold themselves accountable. For this reason, the public sector must endorse data driven policies, and multi-jurisdictional and multi-departmental coordination. Community based groups and collaboratives must also work to ensure accountability structures for themselves and the public sector.

Recommended Sample Strategies

- Ensure the creation of a single accountability structure with enough authority to hold departments and agencies accountable for public safety.
- Increase collaboration and aligning of missions within and between departments to ensure all entities are moving towards a similar goal of achieving public safety and joint political will on violence reduction.
- Ensure cross-agency policy planning, operations, and funding.
- Develop and implement accountability structures, such as MOU's and pre/post-surveys.
- Build a robust Multi-Sector Violence Reduction Community Collaborative that includes representatives from the public and private sectors, community organizations, law enforcement, schools, and community members. Work to collectively come up with an Action Plan that will guide all coordinated work to successfully reduce violence and to ensure stable funding streams for the violence reduction project.
- Ensure coordination and collaboration of private, public, academic, nonprofit, community-based, and faith-based sectors on keeping the public sector accountable for community violence reduction.

3 Data-Driven Policy Making

Within high crime communities and communities in general, government efficacy is often impeded by an overall lack of data driven decision-making, data-sharing policies, and utilization of sound evaluation methods. The absence of data-driven policies in many ways helps contribute to inadequate government coordination and accountability that prevents a sustained and effective implementation of policies that will support healthy families. Advocating to policy makers can promote the implementation of long term, solutions that prioritize the use of data driven planning and evaluation measures.

Recommended Sample Strategies

- Conduct evaluation based on an action or strategic plan with measurable objectives and outcomes that can be monitored to assess process and outcomes on concrete data driven policy making.
- Ensure policy based diagnosis and data driven policy planning.
- Goals and programming must be tied to best practices and research.
- Ensure cross-jurisdictional agency policy planning, operations, funding, and evaluations.
- Eliminate regulatory barriers for information sharing between departments and across agencies.
- Develop protocols for information sharing.
- Build an organizational culture that promotes intelligent data-sharing policies.
- Standardize and classify data across departments and entities under similar language to ensure successful and effective data sharing.
- The public sector must adopt the use of empirical procedures and data to influence decision-making, resource allocation, and program operation. ■

Conclusion

The Scorecard provides a better understanding of the challenges youth and families in particular areas of the City face every day. It clearly demonstrates the disparity in public safety equity that exists in Los Angeles. Through grading the school conditions, risk factors, and protective factors, this tool points to specific reasons why communities continue to suffer high levels of crime.

The current political conditions in Los Angeles present a perfect opportunity for decisive action against the epidemic of violence that continues in specific areas of the City. ***By focusing the Scorecard on small geographic areas, it becomes easier to identify what strategies need to be undertaken at each ZIP code and also at the citywide level.***

This tool is presented in hopes that it generates constructive dialogue and inspires action. It is not simply a report on the inequity of public safety in Los Angeles, but is also a tool to advocate for continued investment in quality schools, community policing efforts, strong community-based prevention infrastructure, and reentry services in the communities that need it most.

This Scorecard should serve as a galvanizing call for foundations, grassroots and grasstops advocates, policy organizations, community organizations, and community members to build the public and political will to strengthen community infrastructure across Los Angeles in order to guarantee every family can live and thrive in a safe environment. ■



Appendix A

Community Safety Scorecards

The Community Safety Scorecards that follow are the Scorecards with the highest and lowest scores overall on all categories of safety, school conditions, risk and protective factors. In studying these Scorecards it is evident that when school conditions, risk and protective factors are at an “A”, safety is often at an “A” as well. This validates the idea that all sectors must work together in order to achieve safety in a community.

90272

Scorecard

ZIP Code 90272 encompasses Will Rogers State Historic Park and the neighborhood of Pacific Palisades. It is bordered by the Pacific Ocean to the south and the City of Santa Monica to the east.

Safety

On a scale from A-F, with "A" being a safe neighborhood

Gang Related Crime Rate ¹	Violent Crime Rate ²	Child Abuse Rate ³
0.19 per 1,000 residents	1.02 per 1,000 residents	0.19 per 1,000 children

A

Rank (out of 104 in City of LA) 1st Safest	2.83 per 1,000 residents City of LA	5.60 per 1,000 residents City of LA	9.78 per 1,000 children City of LA
--	--	--	---------------------------------------

School

On a scale from A-F, with "A" having good schools

797 High School API ⁴	12.62% High School Truancy Rate ⁵	833 Middle School API ⁶	0.14% Middle School Truancy Rate ⁷	85.6% High School Graduation Rate ⁸
----------------------------------	--	------------------------------------	---	--

A

Rank (out of 104 in City of LA) 2nd Best	618 LAUSD High School Average	11.14% LAUSD High School Average	683 LAUSD Middle School Average	4.57% LAUSD Middle School Average	72.4% LAUSD High School Average
--	-------------------------------	----------------------------------	---------------------------------	-----------------------------------	---------------------------------

Risk Factors

On a scale from A-F, with "A" having few risk factors

2.07% Families in Poverty ⁹	2.98% Unemployment ¹⁰	17.26% Single Parent Families ¹¹	10.67% High School students scoring below basic in English ¹²	9.00% Middle School students scoring below basic in English ¹³
--	----------------------------------	---	--	---

A

Rank (out of 104 in City of LA) 1st Least Risky	15.26% City of LA	7.47% City of LA	38.25% City of LA	42.74% LAUSD High School Average	29.50% LAUSD Middle School Average
---	-------------------	------------------	-------------------	----------------------------------	------------------------------------

Protective Factors

On a scale from A-F, with "A" having many protective factors

0.40 per 1,000 Residents Violence Prevention Services ¹⁴	\$707 per capita Youth Violence Prevention Nonprofit Revenue ¹⁵	89% High School Teachers with Full Credentials ¹⁶	95% Middle School Teachers with Full Credentials ¹⁷	88.13% Active Voting Age Population ¹⁸
---	--	--	--	---

A

Rank (out of 104 in City of LA) 4th Most Protected	1.17 per 1,000 Residents City of LA	\$1,341 per capita City of LA	81% LAUSD High School Average	81% LAUSD Middle School Average	38.49% City of LA
--	-------------------------------------	-------------------------------	-------------------------------	---------------------------------	-------------------

Data Sources:

Refer to appendix for all source and calculation information

90024

Scorecard

ZIP Code 90024 is located around the University of California Los Angeles campus. It is bordered approximately by Sunset Boulevard to the north, Santa Monica Boulevard to the South, Veteran Avenue to the west and the Los Angeles Country Club to the east.

Safety

On a scale from A-F, with "A" being a safe neighborhood

Gang Related Crime Rate ¹	Violent Crime Rate ²	Child Abuse Rate ³
0.14 per 1,000 residents	0.96 per 1,000 residents	0.56 per 1,000 children

A

Rank (out of 104 in City of LA) 4th Safest	2.83 per 1,000 residents City of LA	5.60 per 1,000 residents City of LA	9.78 per 1,000 children City of LA
--	--	--	---------------------------------------

School

On a scale from A-F, with "A" having good schools

659 High School API ⁴	2.75% High School Truancy Rate ⁵	701 Middle School API ⁶	0.57% Middle School Truancy Rate ⁷	67.9% High School Graduation Rate ⁸
----------------------------------	---	------------------------------------	---	--

C

Rank (out of 104 in City of LA) 43rd Best	618 LAUSD High School Average	11.14% LAUSD High School Average	683 LAUSD Middle School Average	4.57% LAUSD Middle School Average	72.4% LAUSD High School Average
---	-------------------------------	----------------------------------	---------------------------------	-----------------------------------	---------------------------------

Risk Factors

On a scale from A-F, with "A" having few risk factors

6.24% Families in Poverty ⁹	8.00% Unemployment ¹⁰	23.20% Single Parent Families ¹¹	28.00% High School students scoring below basic in English ¹²	28.00% Middle School students scoring below basic in English ¹³
--	----------------------------------	---	--	--

B

Rank (out of 104 in City of LA) 28th Least Risky	15.26% City of LA	7.47% City of LA	38.25% City of LA	42.74% LAUSD High School Average	29.50% LAUSD Middle School Average
--	-------------------	------------------	-------------------	----------------------------------	------------------------------------

Protective Factors

On a scale from A-F, with "A" having many protective factors

0.52 per 1,000 Residents Violence Prevention Services ¹⁴	\$992 per capita Youth Violence Prevention Nonprofit Revenue ¹⁵	89% High School Teachers with Full Credentials ¹⁶	84% Middle School Teachers with Full Credentials ¹⁷	44.69% Active Voting Age Population ¹⁸
---	--	--	--	---

D

Rank (out of 104 in City of LA) 72nd Most Protected	1.17 per 1,000 Residents City of LA	\$1,341 per capita City of LA	81% LAUSD High School Average	81% LAUSD Middle School Average	38.49% City of LA
---	-------------------------------------	-------------------------------	-------------------------------	---------------------------------	-------------------

Data Sources:

Refer to appendix for all source and calculation information

90067

Scorecard

ZIP Code 90067 is located along the Avenue of The Stars. It is bordered by Santa Monica Boulevard to the north, Pico Boulevard to the south, Century Park West to the west, and Century Park East to the east.

Safety

On a scale from A-F, with "A" being a safe neighborhood

Gang Related Crime Rate ¹	Violent Crime Rate ²	Child Abuse Rate ³
0.73 per 1,000 residents	1.15 per 1,000 residents	0.00 per 1,000 children

A

Rank (out of 104 in City of LA) 5th Safest	2.83 per 1,000 residents City of LA	5.60 per 1,000 residents City of LA	9.78 per 1,000 children City of LA
--	--	--	---------------------------------------

School

On a scale from A-F, with "A" having good schools

659 High School API ⁴	2.75% High School Truancy Rate ⁵	701 Middle School API ⁶	0.57% Middle School Truancy Rate ⁷	67.9% High School Graduation Rate ⁸
----------------------------------	---	------------------------------------	---	--

C

Rank (out of 104 in City of LA) 43rd Best	618 LAUSD High School Average	11.14% LAUSD High School Average	683 LAUSD Middle School Average	4.57% LAUSD Middle School Average	72.4% LAUSD High School Average
---	-------------------------------	----------------------------------	---------------------------------	-----------------------------------	---------------------------------

Risk Factors

On a scale from A-F, with "A" having few risk factors

5.52% Families in Poverty ⁹	4.63% Unemployment ¹⁰	33.96% Single Parent Families ¹¹	28.00% High School students scoring below basic in English ¹²	28.00% Middle School students scoring below basic in English ¹³
--	----------------------------------	---	--	--

B

Rank (out of 104 in City of LA) 35th Least Risky	15.26% City of LA	7.47% City of LA	38.25% City of LA	42.74% LAUSD High School Average	29.50% LAUSD Middle School Average
--	-------------------	------------------	-------------------	----------------------------------	------------------------------------

Protective Factors

On a scale from A-F, with "A" having many protective factors

2.23 per 1,000 Residents Violence Prevention Services ¹⁴	\$1,905 per capita Youth Violence Prevention Nonprofit Revenue ¹⁵	89% High School Teachers with Full Credentials ¹⁶	84% Middle School Teachers with Full Credentials ¹⁷	81.36% Active Voting Age Population ¹⁸
---	--	--	--	---

A

Rank (out of 104 in City of LA) 21st Most Protected	1.17 per 1,000 Residents City of LA	\$1,341 per capita City of LA	81% LAUSD High School Average	81% LAUSD Middle School Average	38.49% City of LA
---	-------------------------------------	-------------------------------	-------------------------------	---------------------------------	-------------------

Data Sources:

Refer to appendix for all source and calculation information

90010

Scorecard

ZIP Code 90010 is located west of downtown Los Angeles. It runs along Wilshire Boulevard, between 6th Street to the north, 8th Street to the south, Longwood Avenue to the west, and Fremont Place to the east.

Safety

On a scale from A-F, with "A" being a safe neighborhood

Gang Related Crime Rate ¹	Violent Crime Rate ²	Child Abuse Rate ³
0.26 per 1,000 residents	0.52 per 1,000 residents	1.29 per 1,000 children

A

Rank (out of 104 in City of LA) 6th Safest	2.83 per 1,000 residents City of LA	5.60 per 1,000 residents City of LA	9.78 per 1,000 children City of LA
--	--	--	---------------------------------------

School

On a scale from A-F, with "A" having good schools

No Valid API High School API ⁴	13.15% High School Truancy Rate ⁵	791 Middle School API ⁶	0.05% Middle School Truancy Rate ⁷	80.7% High School Graduation Rate ⁸
---	--	------------------------------------	---	--

B

Rank (out of 104 in City of LA) 31st Best	618 LAUSD High School Average	11.14% LAUSD High School Average	683 LAUSD Middle School Average	4.57% LAUSD Middle School Average	72.4% LAUSD High School Average
---	-------------------------------	----------------------------------	---------------------------------	-----------------------------------	---------------------------------

Risk Factors

On a scale from A-F, with "A" having few risk factors

14.37% Families in Poverty ⁹	5.53% Unemployment ¹⁰	31.70% Single Parent Families ¹¹	34.33% High School students scoring below basic in English ¹²	15.67% Middle School students scoring below basic in English ¹³
---	----------------------------------	---	--	--

B

Rank (out of 104 in City of LA) 38th Least Risky	15.26% City of LA	7.47% City of LA	38.25% City of LA	42.74% LAUSD High School Average	29.50% LAUSD Middle School Average
--	-------------------	------------------	-------------------	----------------------------------	------------------------------------

Protective Factors

On a scale from A-F, with "A" having many protective factors

46.36 per 1,000 Residents Violence Prevention Services ¹⁴	\$2,921 per capita Youth Violence Prevention Nonprofit Revenue ¹⁵	Data Not Available High School Teachers with Full Credentials ¹⁶	91% Middle School Teachers with Full Credentials ¹⁷	Data Not Available Active Voting Age Population ¹⁸
--	--	---	--	---

A

Rank (out of 104 in City of LA) 2nd Most Protected	1.17 per 1,000 Residents City of LA	\$1,341 per capita City of LA	81% LAUSD High School Average	81% LAUSD Middle School Average	38.49% City of LA
--	-------------------------------------	-------------------------------	-------------------------------	---------------------------------	-------------------

Data Sources:
Refer to appendix for all source and calculation information

90210

Scorecard

ZIP Code 90210 is located partly in the City of Los Angeles and party in the City of Beverly Hills. It is bordered approximately by Mullholland Drive to the north, Wilshire Boulevard to the south, Beverly Glen Boulevard to the west, and Doheny Drive to the east.

Safety

On a scale from A-F, with "A" being a safe neighborhood

Gang Related Crime Rate ¹	Violent Crime Rate ²	Child Abuse Rate ³
0.05 per 1,000 residents	0.31 per 1,000 residents	2.27 per 1,000 children

A

Rank (out of 104 in City of LA) 7th Safest	2.83 per 1,000 residents City of LA	5.60 per 1,000 residents City of LA	9.78 per 1,000 children City of LA
--	--	--	---------------------------------------

School

On a scale from A-F, with "A" having good schools

659 High School API ⁴	2.75% High School Truancy Rate ⁵	701 Middle School API ⁶	0.57% Middle School Truancy Rate ⁷	67.9% High School Graduation Rate ⁸
----------------------------------	---	------------------------------------	---	--

C

Rank (out of 104 in City of LA) 43rd Best	618 LAUSD High School Average	11.14% LAUSD High School Average	683 LAUSD Middle School Average	4.57% LAUSD Middle School Average	72.4% LAUSD High School Average
---	-------------------------------	----------------------------------	---------------------------------	-----------------------------------	---------------------------------

Risk Factors

On a scale from A-F, with "A" having few risk factors

3.78% Families in Poverty ⁹	3.52% Unemployment ¹⁰	16.85% Single Parent Families ¹¹	28.00% High School students scoring below basic in English ¹²	28.00% Middle School students scoring below basic in English ¹³
--	----------------------------------	---	--	--

A

Rank (out of 104 in City of LA) 10th Least Risky	15.26% City of LA	7.47% City of LA	38.25% City of LA	42.74% LAUSD High School Average	29.50% LAUSD Middle School Average
--	-------------------	------------------	-------------------	----------------------------------	------------------------------------

Protective Factors

On a scale from A-F, with "A" having many protective factors

0.64 per 1,000 Residents Violence Prevention Services ¹⁴	\$383 per capita Youth Violence Prevention Nonprofit Revenue ¹⁵	89% High School Teachers with Full Credentials ¹⁶	84% Middle School Teachers with Full Credentials ¹⁷	58.78% Active Voting Age Population ¹⁸
---	--	--	--	---

C

Rank (out of 104 in City of LA) 59th Most Protected	1.17 per 1,000 Residents City of LA	\$1,341 per capita City of LA	81% LAUSD High School Average	81% LAUSD Middle School Average	38.49% City of LA
---	-------------------------------------	-------------------------------	-------------------------------	---------------------------------	-------------------

Data Sources:

Refer to appendix for all source and calculation information

90068

Scorecard

ZIP Code 90068 is located west of Griffith Park along the 101 Freeway. It is bordered by Forest Lawn Drive to the north, Franklin Avenue to the south, Runyon Canyon Park to the west and Griffith Park to the east.

Safety

On a scale from A-F, with "A" being a safe neighborhood

Gang Related Crime Rate ¹	Violent Crime Rate ²	Child Abuse Rate ³
0.86 per 1,000 residents	2.58 per 1,000 residents	0.00 per 1,000 children

A

Rank (out of 104 in City of LA) 8th Safest	2.83 per 1,000 residents City of LA	5.60 per 1,000 residents City of LA	9.78 per 1,000 children City of LA
--	--	--	---------------------------------------

School

On a scale from A-F, with "A" having good schools

613 High School API ⁴	19.05% High School Truancy Rate ⁵	677 Middle School API ⁶	19.05% Middle School Truancy Rate ⁷	77.4% High School Graduation Rate ⁸
----------------------------------	--	------------------------------------	--	--

F

Rank (out of 104 in City of LA) 84th Best	618 LAUSD High School Average	11.14% LAUSD High School Average	683 LAUSD Middle School Average	4.57% LAUSD Middle School Average	72.4% LAUSD High School Average
---	-------------------------------	----------------------------------	---------------------------------	-----------------------------------	---------------------------------

Risk Factors

On a scale from A-F, with "A" having few risk factors

5.94% Families in Poverty ⁹	7.24% Unemployment ¹⁰	31.01% Single Parent Families ¹¹	26.67% High School students scoring below basic in English ¹²	32.67% Middle School students scoring below basic in English ¹³
--	----------------------------------	---	--	--

B

Rank (out of 104 in City of LA) 42nd Least Risky	15.26% City of LA	7.47% City of LA	38.25% City of LA	42.74% LAUSD High School Average	29.50% LAUSD Middle School Average
--	-------------------	------------------	-------------------	----------------------------------	------------------------------------

Protective Factors

On a scale from A-F, with "A" having many protective factors

0.40 per 1,000 Residents Violence Prevention Services ¹⁴	\$305 per capita Youth Violence Prevention Nonprofit Revenue ¹⁵	86% High School Teachers with Full Credentials ¹⁶	87% Middle School Teachers with Full Credentials ¹⁷	60.61% Active Voting Age Population ¹⁸
---	--	--	--	---

C

Rank (out of 104 in City of LA) 58th Most Protected	1.17 per 1,000 Residents City of LA	\$1,341 per capita City of LA	81% LAUSD High School Average	81% LAUSD Middle School Average	38.49% City of LA
---	-------------------------------------	-------------------------------	-------------------------------	---------------------------------	-------------------

Data Sources:

Refer to appendix for all source and calculation information

90077

Scorecard

ZIP Code 90077 is located north of the University of California Los Angeles campus. It is bordered by Mullholland Drive to the north, Sunset Boulevard to the south, and reaches just outside of Roscomare Road and Beverly Glen Boulevard on the west and east side, respectively.

Safety

On a scale from A-F, with "A" being a safe neighborhood

Gang Related Crime Rate ¹	Violent Crime Rate ²	Child Abuse Rate ³
0.09 per 1,000 residents	0.29 per 1,000 residents	3.16 per 1,000 children

A

Rank (out of 104 in City of LA) 9th Safest	2.83 per 1,000 residents City of LA	5.60 per 1,000 residents City of LA	9.78 per 1,000 children City of LA
--	--	--	---------------------------------------

School

On a scale from A-F, with "A" having good schools

659 High School API ⁴	2.75% High School Truancy Rate ⁵	701 Middle School API ⁶	0.57% Middle School Truancy Rate ⁷	67.9% High School Graduation Rate ⁸
----------------------------------	---	------------------------------------	---	--

C

Rank (out of 104 in City of LA) 43rd Best	618 LAUSD High School Average	11.14% LAUSD High School Average	683 LAUSD Middle School Average	4.57% LAUSD Middle School Average	72.4% LAUSD High School Average
---	-------------------------------	----------------------------------	---------------------------------	-----------------------------------	---------------------------------

Risk Factors

On a scale from A-F, with "A" having few risk factors

2.70% Families in Poverty ⁹	2.45% Unemployment ¹⁰	16.85% Single Parent Families ¹¹	28.00% High School students scoring below basic in English ¹²	28.00% Middle School students scoring below basic in English ¹³
--	----------------------------------	---	--	--

A

Rank (out of 104 in City of LA) 6th Least Risky	15.26% City of LA	7.47% City of LA	38.25% City of LA	42.74% LAUSD High School Average	29.50% LAUSD Middle School Average
---	-------------------	------------------	-------------------	----------------------------------	------------------------------------

Protective Factors

On a scale from A-F, with "A" having many protective factors

Data Not Available Violence Prevention Services ¹⁴	\$87 per capita Youth Violence Prevention Nonprofit Revenue ¹⁵	89% High School Teachers with Full Credentials ¹⁶	84% Middle School Teachers with Full Credentials ¹⁷	58.27% Active Voting Age Population ¹⁸
---	---	--	--	---

C

Rank (out of 104 in City of LA) 53rd Most Protected	1.17 per 1,000 Residents City of LA	\$1,341 per capita City of LA	81% LAUSD High School Average	81% LAUSD Middle School Average	38.49% City of LA
---	-------------------------------------	-------------------------------	-------------------------------	---------------------------------	-------------------

Data Sources:

Refer to appendix for all source and calculation information

91602

Scorecard

ZIP Code 91602 is located along the 101 and 134 Freeway interchange. It is bordered approximately by Camarillo Street to the north, Universal City to the south, Colfax Avenue to the west, and Clybourn Avenue to the east.

Safety

On a scale from A-F, with "A" being a safe neighborhood

Gang Related Crime Rate ¹	Violent Crime Rate ²	Child Abuse Rate ³
0.47 per 1,000 residents	1.96 per 1,000 residents	1.30 per 1,000 children

A

Rank (out of 104 in City of LA) 10th Safest	2.83 per 1,000 residents City of LA	5.60 per 1,000 residents City of LA	9.78 per 1,000 children City of LA
---	--	--	---------------------------------------

School

On a scale from A-F, with "A" having good schools

685 High School API ⁴	15.08% High School Truancy Rate ⁵	749 Middle School API ⁶	1.64% Middle School Truancy Rate ⁷	86.6% High School Graduation Rate ⁸
----------------------------------	--	------------------------------------	---	--

B

Rank (out of 104 in City of LA) 27th Best	618 LAUSD High School Average	11.14% LAUSD High School Average	683 LAUSD Middle School Average	4.57% LAUSD Middle School Average	72.4% LAUSD High School Average
---	-------------------------------	----------------------------------	---------------------------------	-----------------------------------	---------------------------------

Risk Factors

On a scale from A-F, with "A" having few risk factors

3.51% Families in Poverty ⁹	5.94% Unemployment ¹⁰	37.88% Single Parent Families ¹¹	27.00% High School students scoring below basic in English ¹²	17.67% Middle School students scoring below basic in English ¹³
--	----------------------------------	---	--	--

B

Rank (out of 104 in City of LA) 27th Least Risky	15.26% City of LA	7.47% City of LA	38.25% City of LA	42.74% LAUSD High School Average	29.50% LAUSD Middle School Average
--	-------------------	------------------	-------------------	----------------------------------	------------------------------------

Protective Factors

On a scale from A-F, with "A" having many protective factors

0.64 per 1,000 Residents Violence Prevention Services ¹⁴	\$225 per capita Youth Violence Prevention Nonprofit Revenue ¹⁵	91% High School Teachers with Full Credentials ¹⁶	98% Middle School Teachers with Full Credentials ¹⁷	32.98% Active Voting Age Population ¹⁸
---	--	--	--	---

B

Rank (out of 104 in City of LA) 41st Most Protected	1.17 per 1,000 Residents City of LA	\$1,341 per capita City of LA	81% LAUSD High School Average	81% LAUSD Middle School Average	38.49% City of LA
---	-------------------------------------	-------------------------------	-------------------------------	---------------------------------	-------------------

Data Sources:

Refer to appendix for all source and calculation information

90014

Scorecard

ZIP Code 90014 is located in downtown Los Angeles. It is bordered by 6th Street on the north, 9th Street on the south, Olive Street on the west, and San Pedro Street on the east.

Safety

On a scale from A-F, with "A" being a safe neighborhood

Gang Related Crime Rate ¹	Violent Crime Rate ²	Child Abuse Rate ³
9.48 per 1,000 residents	64.42 per 1,000 residents	80.65 per 1,000 children

F

Rank (out of 104 in City of LA) 104th Safest	2.83 per 1,000 residents City of LA	5.60 per 1,000 residents City of LA	9.78 per 1,000 children City of LA
--	--	--	---------------------------------------

School

On a scale from A-F, with "A" having good schools

502 High School API ⁴	8.73% High School Truancy Rate ⁵	791 Middle School API ⁶	0.05% Middle School Truancy Rate ⁷	67.3% High School Graduation Rate ⁸
--	---	--	---	--

D

Rank (out of 104 in City of LA) 64th Best	618 LAUSD High School Average	11.14% LAUSD High School Average	683 LAUSD Middle School Average	4.57% LAUSD Middle School Average	72.4% LAUSD High School Average
---	---	--	---	---	---

Risk Factors

On a scale from A-F, with "A" having few risk factors

18.64% Families in Poverty ⁹	32.21% Unemployment ¹⁰	53.19% Single Parent Families ¹¹	58.67% High School students scoring below basic in English ¹²	15.67% Middle School students scoring below basic in English ¹³
---	---	---	--	--

F

Rank (out of 104 in City of LA) 97th Least Risky	15.26% City of LA	7.47% City of LA	38.25% City of LA	42.74% LAUSD High School Average	29.50% LAUSD Middle School Average
--	-----------------------------	----------------------------	-----------------------------	--	--

Protective Factors

On a scale from A-F, with "A" having many protective factors

5.91 per 1,000 Residents Violence Prevention Services ¹⁴	\$4,339 per capita Youth Violence Prevention Nonprofit Revenue ¹⁵	79% High School Teachers with Full Credentials ¹⁶	91% Middle School Teachers with Full Credentials ¹⁷	53.35% Active Voting Age Population ¹⁸
--	---	--	--	---

C

Rank (out of 104 in City of LA) 44th Most Protected	1.17 per 1,000 Residents City of LA	\$1,341 per capita City of LA	81% LAUSD High School Average	81% LAUSD Middle School Average	38.49% City of LA
---	--	--	---	---	-----------------------------

Data Sources:

Refer to appendix for all source and calculation information

90021

Scorecard

ZIP Code 90021 is located in southeast downtown Los Angeles. It is bordered by 6th Street to the north, Washington Boulevard to the south, San Pedro Street to the west, and the Los Angeles River to the east.

Safety

On a scale from A-F, with "A" being a safe neighborhood

Gang Related Crime Rate ¹	Violent Crime Rate ²	Child Abuse Rate ³
10.33 per 1,000 residents	67.75 per 1,000 residents	13.75 per 1,000 children

F

Rank (out of 104 in City of LA) 103rd Safest	2.83 per 1,000 residents City of LA	5.60 per 1,000 residents City of LA	9.78 per 1,000 children City of LA
--	--	--	---------------------------------------

School

On a scale from A-F, with "A" having good schools

551 High School API ⁴	15.59% High School Truancy Rate ⁵	570 Middle School API ⁶	13.98% Middle School Truancy Rate ⁷	75.3% High School Graduation Rate ⁸
----------------------------------	--	------------------------------------	--	--

F

Rank (out of 104 in City of LA) 96th Best	618 LAUSD High School Average	11.14% LAUSD High School Average	683 LAUSD Middle School Average	4.57% LAUSD Middle School Average	72.4% LAUSD High School Average
---	-------------------------------	----------------------------------	---------------------------------	-----------------------------------	---------------------------------

Risk Factors

On a scale from A-F, with "A" having few risk factors

30.87% Families in Poverty ⁹	32.91% Unemployment ¹⁰	46.51% Single Parent Families ¹¹	45.00% High School students scoring below basic in English ¹²	58.33% Middle School students scoring below basic in English ¹³
---	-----------------------------------	---	--	--

F

Rank (out of 104 in City of LA) 103rd Least Risky	15.26% City of LA	7.47% City of LA	38.25% City of LA	42.74% LAUSD High School Average	29.50% LAUSD Middle School Average
---	-------------------	------------------	-------------------	----------------------------------	------------------------------------

Protective Factors

On a scale from A-F, with "A" having many protective factors

11.91 per 1,000 Residents Violence Prevention Services ¹⁴	\$1,875 per capita Youth Violence Prevention Nonprofit Revenue ¹⁵	90% High School Teachers with Full Credentials ¹⁶	83% Middle School Teachers with Full Credentials ¹⁷	45.55% Active Voting Age Population ¹⁸
--	--	--	--	---

B

Rank (out of 104 in City of LA) 25th Most Protected	1.17 per 1,000 Residents City of LA	\$1,341 per capita City of LA	81% LAUSD High School Average	81% LAUSD Middle School Average	38.49% City of LA
---	-------------------------------------	-------------------------------	-------------------------------	---------------------------------	-------------------

Data Sources:

Refer to appendix for all source and calculation information

90013

Scorecard

ZIP Code 90013 is located in downtown Los Angeles. It is bordered by approximately 3rd Street to the north, 6th Street to the south, Olive Street to the west, and the Los Angeles River to the east.

Safety

On a scale from A-F, with "A" being a safe neighborhood

Gang Related Crime Rate ¹	Violent Crime Rate ²	Child Abuse Rate ³
10.25 per 1,000 residents	38.57 per 1,000 residents	35.63 per 1,000 children

F

Rank (out of 104 in City of LA) 102nd Safest	2.83 per 1,000 residents City of LA	5.60 per 1,000 residents City of LA	9.78 per 1,000 children City of LA
--	--	--	---------------------------------------

School

On a scale from A-F, with "A" having good schools

540 High School API ⁴	15.26% High School Truancy Rate ⁵	589 Middle School API ⁶	1.19% Middle School Truancy Rate ⁷	49.5% High School Graduation Rate ⁸
----------------------------------	--	------------------------------------	---	--

F

Rank (out of 104 in City of LA) 97th Best	618 LAUSD High School Average	11.14% LAUSD High School Average	683 LAUSD Middle School Average	4.57% LAUSD Middle School Average	72.4% LAUSD High School Average
---	-------------------------------	----------------------------------	---------------------------------	-----------------------------------	---------------------------------

Risk Factors

On a scale from A-F, with "A" having few risk factors

23.68% Families in Poverty ⁹	42.42% Unemployment ¹⁰	55.56% Single Parent Families ¹¹	43.33% High School students scoring below basic in English ¹²	42.00% Middle School students scoring below basic in English ¹³
---	-----------------------------------	---	--	--

F

Rank (out of 104 in City of LA) 104th Least Risky	15.26% City of LA	7.47% City of LA	38.25% City of LA	42.74% LAUSD High School Average	29.50% LAUSD Middle School Average
---	-------------------	------------------	-------------------	----------------------------------	------------------------------------

Protective Factors

On a scale from A-F, with "A" having many protective factors

12.11 per 1,000 Residents Violence Prevention Services ¹⁴	\$2,730 per capita Youth Violence Prevention Nonprofit Revenue ¹⁵	93% High School Teachers with Full Credentials ¹⁶	87% Middle School Teachers with Full Credentials ¹⁷	12.69% Active Voting Age Population ¹⁸
--	--	--	--	---

B

Rank (out of 104 in City of LA) 36th Most Protected	1.17 per 1,000 Residents City of LA	\$1,341 per capita City of LA	81% LAUSD High School Average	81% LAUSD Middle School Average	38.49% City of LA
---	-------------------------------------	-------------------------------	-------------------------------	---------------------------------	-------------------

Data Sources:

Refer to appendix for all source and calculation information

90003

Scorecard

ZIP Code 90003 is located along the 110 Interstate. It is bordered by Slauson Avenue to the north, 107th Street to the south, Figueroa Street to the west, and Avalon Boulevard to the east.

Safety

On a scale from A-F, with "A" being a safe neighborhood

Gang Related Crime Rate ¹	Violent Crime Rate ²	Child Abuse Rate ³
9.04 per 1,000 residents	18.04 per 1,000 residents	22.58 per 1,000 children

F

Rank (out of 104 in City of LA) 101st Safest	2.83 per 1,000 residents City of LA	5.60 per 1,000 residents City of LA	9.78 per 1,000 children City of LA
--	--	--	---------------------------------------

School

On a scale from A-F, with "A" having good schools

516 High School API ⁴	0.46% High School Truancy Rate ⁵	598 Middle School API ⁶	0.35% Middle School Truancy Rate ⁷	68.0% High School Graduation Rate ⁸
----------------------------------	---	------------------------------------	---	--

D

Rank (out of 104 in City of LA) 74th Best	618 LAUSD High School Average	11.14% LAUSD High School Average	683 LAUSD Middle School Average	4.57% LAUSD Middle School Average	72.4% LAUSD High School Average
---	-------------------------------	----------------------------------	---------------------------------	-----------------------------------	---------------------------------

Risk Factors

On a scale from A-F, with "A" having few risk factors

33.64% Families in Poverty ⁹	12.92% Unemployment ¹⁰	48.99% Single Parent Families ¹¹	58.00% High School students scoring below basic in English ¹²	46.33% Middle School students scoring below basic in English ¹³
---	-----------------------------------	---	--	--

F

Rank (out of 104 in City of LA) 98th Least Risky	15.26% City of LA	7.47% City of LA	38.25% City of LA	42.74% LAUSD High School Average	29.50% LAUSD Middle School Average
--	-------------------	------------------	-------------------	----------------------------------	------------------------------------

Protective Factors

On a scale from A-F, with "A" having many protective factors

0.82 per 1,000 Residents Violence Prevention Services ¹⁴	\$89 per capita Youth Violence Prevention Nonprofit Revenue ¹⁵	82% High School Teachers with Full Credentials ¹⁶	72% Middle School Teachers with Full Credentials ¹⁷	25.99% Active Voting Age Population ¹⁸
---	---	--	--	---

F

Rank (out of 104 in City of LA) 100th Most Protected	1.17 per 1,000 Residents City of LA	\$1,341 per capita City of LA	81% LAUSD High School Average	81% LAUSD Middle School Average	38.49% City of LA
--	-------------------------------------	-------------------------------	-------------------------------	---------------------------------	-------------------

Data Sources:

Refer to appendix for all source and calculation information

90058

Scorecard

ZIP Code 90058 is located partly in the City of Los Angeles and partly in the City of Vernon. It is bordered approximately by Washington Boulevard to the north, Slauson Avenue to the south, Long Beach Avenue to the west, and the 710 Interstate to the east.

Safety

On a scale from A-F, with "A" being a safe neighborhood

Gang Related Crime Rate ¹	Violent Crime Rate ²	Child Abuse Rate ³
18.06 per 1,000 residents	15.74 per 1,000 residents	15.08 per 1,000 children

F

Rank (out of 104 in City of LA) 100th Safest	2.83 per 1,000 residents City of LA	5.60 per 1,000 residents City of LA	9.78 per 1,000 children City of LA
--	--	--	---------------------------------------

School

On a scale from A-F, with "A" having good schools

564 High School API ⁴	24.39% High School Truancy Rate ⁵	776 Middle School API ⁶	0.00% Middle School Truancy Rate ⁷	66.0% High School Graduation Rate ⁸
----------------------------------	--	------------------------------------	---	--

D

Rank (out of 104 in City of LA) 73rd Best	618 LAUSD High School Average	11.14% LAUSD High School Average	683 LAUSD Middle School Average	4.57% LAUSD Middle School Average	72.4% LAUSD High School Average
---	-------------------------------	----------------------------------	---------------------------------	-----------------------------------	---------------------------------

Risk Factors

On a scale from A-F, with "A" having few risk factors

41.04% Families in Poverty ⁹	14.60% Unemployment ¹⁰	48.61% Single Parent Families ¹¹	43.67% High School students scoring below basic in English ¹²	20.00% Middle School students scoring below basic in English ¹³
---	-----------------------------------	---	--	--

F

Rank (out of 104 in City of LA) 89th Least Risky	15.26% City of LA	7.47% City of LA	38.25% City of LA	42.74% LAUSD High School Average	29.50% LAUSD Middle School Average
--	-------------------	------------------	-------------------	----------------------------------	------------------------------------

Protective Factors

On a scale from A-F, with "A" having many protective factors

5.08 per 1,000 Residents Violence Prevention Services ¹⁴	\$12,169 per capita Youth Violence Prevention Nonprofit Revenue ¹⁵	92% High School Teachers with Full Credentials ¹⁶	100% Middle School Teachers with Full Credentials ¹⁷	14.23% Active Voting Age Population ¹⁸
---	---	--	---	---

A

Rank (out of 104 in City of LA) 12th Most Protected	1.17 per 1,000 Residents City of LA	\$1,341 per capita City of LA	81% LAUSD High School Average	81% LAUSD Middle School Average	38.49% City of LA
---	-------------------------------------	-------------------------------	-------------------------------	---------------------------------	-------------------

Data Sources:

Refer to appendix for all source and calculation information

90061

Scorecard

ZIP Code 90061 is located along the 110 and 105 Interstate interchange. It is bordered by 107th Street to the north, Rosecrans Avenue to the south, the 110 Interstate to the west, and Avalon Boulevard to the east.

Safety

On a scale from A-F, with "A" being a safe neighborhood

Gang Related Crime Rate ¹	Violent Crime Rate ²	Child Abuse Rate ³
4.53 per 1,000 residents	11.77 per 1,000 residents	26.66 per 1,000 children

F

Rank (out of 104 in City of LA) 99th Safest	2.83 per 1,000 residents City of LA	5.60 per 1,000 residents City of LA	9.78 per 1,000 children City of LA
---	--	--	---------------------------------------

School

On a scale from A-F, with "A" having good schools

515 High School API ⁴	1.05% High School Truancy Rate ⁵	559 Middle School API ⁶	13.65% Middle School Truancy Rate ⁷	42.9% High School Graduation Rate ⁸
----------------------------------	---	------------------------------------	--	--

F

Rank (out of 104 in City of LA) 101st Best	618 LAUSD High School Average	11.14% LAUSD High School Average	683 LAUSD Middle School Average	4.57% LAUSD Middle School Average	72.4% LAUSD High School Average
--	-------------------------------	----------------------------------	---------------------------------	-----------------------------------	---------------------------------

Risk Factors

On a scale from A-F, with "A" having few risk factors

25.75% Families in Poverty ⁹	12.98% Unemployment ¹⁰	51.43% Single Parent Families ¹¹	68.00% High School students scoring below basic in English ¹²	56.67% Middle School students scoring below basic in English ¹³
---	-----------------------------------	---	--	--

F

Rank (out of 104 in City of LA) 102nd Least Risky	15.26% City of LA	7.47% City of LA	38.25% City of LA	42.74% LAUSD High School Average	29.50% LAUSD Middle School Average
---	-------------------	------------------	-------------------	----------------------------------	------------------------------------

Protective Factors

On a scale from A-F, with "A" having many protective factors

1.90 per 1,000 Residents Violence Prevention Services ¹⁴	\$13 per capita Youth Violence Prevention Nonprofit Revenue ¹⁵	69% High School Teachers with Full Credentials ¹⁶	52% Middle School Teachers with Full Credentials ¹⁷	30.80% Active Voting Age Population ¹⁸
---	---	--	--	---

F

Rank (out of 104 in City of LA) 104th Most Protected	1.17 per 1,000 Residents City of LA	\$1,341 per capita City of LA	81% LAUSD High School Average	81% LAUSD Middle School Average	38.49% City of LA
--	-------------------------------------	-------------------------------	-------------------------------	---------------------------------	-------------------

Data Sources:

Refer to appendix for all source and calculation information

90037

Scorecard

ZIP Code 90037 is located along the 110 Interstate. It is bordered by 38th Street to the north, Slauson Avenue to the south, Normandie Avenue to the west, and Main street to the east.

Safety

On a scale from A-F, with "A" being a safe neighborhood

Gang Related Crime Rate ¹	Violent Crime Rate ²	Child Abuse Rate ³
7.20 per 1,000 residents	16.39 per 1,000 residents	13.37 per 1,000 children

F

Rank (out of 104 in City of LA) 98th Safest	2.83 per 1,000 residents City of LA	5.60 per 1,000 residents City of LA	9.78 per 1,000 children City of LA
---	--	--	---------------------------------------

School

On a scale from A-F, with "A" having good schools

No Valid API ⁴	9.09% High School Truancy Rate ⁵	550 Middle School API ⁶	0.75% Middle School Truancy Rate ⁷	69.0% High School Graduation Rate ⁸
---------------------------	---	------------------------------------	---	--

D

Rank (out of 104 in City of LA) 72nd Best	618 LAUSD High School Average	11.14% LAUSD High School Average	683 LAUSD Middle School Average	4.57% LAUSD Middle School Average	72.4% LAUSD High School Average
---	-------------------------------	----------------------------------	---------------------------------	-----------------------------------	---------------------------------

Risk Factors

On a scale from A-F, with "A" having few risk factors

32.64% Families in Poverty ⁹	13.93% Unemployment ¹⁰	50.08% Single Parent Families ¹¹	56.00% High School students scoring below basic in English ¹²	52.67% Middle School students scoring below basic in English ¹³
---	-----------------------------------	---	--	--

F

Rank (out of 104 in City of LA) 99th Least Risky	15.26% City of LA	7.47% City of LA	38.25% City of LA	42.74% LAUSD High School Average	29.50% LAUSD Middle School Average
--	-------------------	------------------	-------------------	----------------------------------	------------------------------------

Protective Factors

On a scale from A-F, with "A" having many protective factors

1.43 per 1,000 Residents Violence Prevention Services ¹⁴	\$128 per capita Youth Violence Prevention Nonprofit Revenue ¹⁵	78% High School Teachers with Full Credentials ¹⁶	87% Middle School Teachers with Full Credentials ¹⁷	25.49% Active Voting Age Population ¹⁸
---	--	--	--	---

F

Rank (out of 104 in City of LA) 99th Most Protected	1.17 per 1,000 Residents City of LA	\$1,341 per capita City of LA	81% LAUSD High School Average	81% LAUSD Middle School Average	38.49% City of LA
---	-------------------------------------	-------------------------------	-------------------------------	---------------------------------	-------------------

Data Sources:

Refer to appendix for all source and calculation information

90015

Scorecard

ZIP Code 90015 is located along the 110 and 10 Interstate interchange. It is bordered by 9th Street to the north, Washington Boulevard to the south, Burlington Avenue to the west, and San Pedro Street to the east.

Safety

On a scale from A-F, with "A" being a safe neighborhood

Gang Related Crime Rate ¹	Violent Crime Rate ²	Child Abuse Rate ³
6.10 per 1,000 residents	18.09 per 1,000 residents	11.70 per 1,000 children

F

Rank (out of 104 in City of LA) 96th Safest	2.83 per 1,000 residents City of LA	5.60 per 1,000 residents City of LA	9.78 per 1,000 children City of LA
---	--	--	---------------------------------------

School

On a scale from A-F, with "A" having good schools

502 High School API ⁴	8.73% High School Truancy Rate ⁵	791 Middle School API ⁶	0.05% Middle School Truancy Rate ⁷	67.3% High School Graduation Rate ⁸
----------------------------------	---	------------------------------------	---	--

D

Rank (out of 104 in City of LA) 64th Best	618 LAUSD High School Average	11.14% LAUSD High School Average	683 LAUSD Middle School Average	4.57% LAUSD Middle School Average	72.4% LAUSD High School Average
---	-------------------------------	----------------------------------	---------------------------------	-----------------------------------	---------------------------------

Risk Factors

On a scale from A-F, with "A" having few risk factors

27.82% Families in Poverty ⁹	9.89% Unemployment ¹⁰	41.07% Single Parent Families ¹¹	58.67% High School students scoring below basic in English ¹²	15.67% Middle School students scoring below basic in English ¹³
---	----------------------------------	---	--	--

D

Rank (out of 104 in City of LA) 81st Least Risky	15.26% City of LA	7.47% City of LA	38.25% City of LA	42.74% LAUSD High School Average	29.50% LAUSD Middle School Average
--	-------------------	------------------	-------------------	----------------------------------	------------------------------------

Protective Factors

On a scale from A-F, with "A" having many protective factors

5.86 per 1,000 Residents Violence Prevention Services ¹⁴	\$2,800 per capita Youth Violence Prevention Nonprofit Revenue ¹⁵	79% High School Teachers with Full Credentials ¹⁶	91% Middle School Teachers with Full Credentials ¹⁷	21.48% Active Voting Age Population ¹⁸
---	--	--	--	---

D

Rank (out of 104 in City of LA) 82nd Most Protected	1.17 per 1,000 Residents City of LA	\$1,341 per capita City of LA	81% LAUSD High School Average	81% LAUSD Middle School Average	38.49% City of LA
---	-------------------------------------	-------------------------------	-------------------------------	---------------------------------	-------------------

Data Sources:

Refer to appendix for all source and calculation information

Appendix B

Citywide List of Ranks & Grades

Safety Score Ranks & Grades

ZIP codes at the top of the scale or with “A” grades were identified as safe and those at the bottom or with “F” grades were identified as unsafe.

ZIP code	Rank	Grade
90272	1	A
90049	2	A
90290	3	A
90024	4	A
90067	5	A
90010	6	A
90210	7	A
90068	8	A
90077	9	A
91602	10	A
90293	11	A
90292	12	A
91436	13	A
90048	14	A
90035	15	A
91604	16	A
91326	17	A
90046	18	A
90025	19	A
90732	20	A
90045	21	A
90066	22	B
90041	23	B
91316	24	B
91307	25	B
91311	26	B
91607	27	B
90502	28	B
91356	29	B
90069	30	B
91403	31	B
91325	32	B
91364	33	B
91040	34	B
90291	35	B

ZIP code	Rank	Grade
91042	36	B
91367	37	B
91423	38	B
90034	39	B
90020	40	B
90036	41	B
90027	42	B
91401	43	C
90065	44	C
90004	45	C
91335	46	C
91345	47	C
90012	48	C
91606	49	C
91306	50	C
91406	51	C
90039	52	C
90005	53	C
91405	54	C
91601	55	C
90042	56	C
91304	57	C
90001	58	C
90247	59	C
90710	60	C
90032	61	C
91324	62	C
91340	63	D
90026	64	D
91342	65	D
91411	66	D
90248	67	D
90019	68	D
91605	69	D
90007	70	D

ZIP code	Rank	Grade
91331	71	D
90006	72	D
91303	73	D
91352	74	D
90038	75	D
90031	76	D
91402	77	D
90731	78	D
91343	79	D
90744	80	D
90029	81	D
90063	82	D
90023	83	D
90016	84	F
90028	85	F
90057	86	F
90033	87	F
90018	88	F
90017	89	F
90047	90	F
90011	91	F
90062	92	F
90043	93	F
90008	94	F
90044	95	F
90015	96	F
90002	97	F
90037	98	F
90061	99	F
90058	100	F
90003	101	F
90013	102	F
90021	103	F
90014	104	F

School Score Ranks & Grades

ZIP codes at the top of the scale or with “A” grades were identified as having good schools and those at the bottom or with “F” grades were identified as having poor schools.

ZIP code	Rank	Grade
91356	1	A
90049	2	A
90272	2	A
91326	4	A
91401	5	A
91423	5	A
91364	7	A
91307	8	A
91324	9	A
91345	10	A
90069	11	A
90034*	12	A
90290	13	A
90036	14	A
90048	14	A
91325	16	A
91304	17	A
90041	18	A
91367	19	A
90065	20	A
91311	21	A
91405	22	B
90731	23	B
90732	23	B
91316	25	B
91402	26	B
91602	27	B
91604	27	B
91607	27	B
90039	30	B
90004*	31	B
90005*	31	B
90010*	31	B
90020*	31	B
91335	35	B
90038	36	B

ZIP code	Rank	Grade
90046	36	B
90045	38	B
90293	38	B
91606*	40	B
91040	41	B
91042	41	B
90024	43	C
90025	43	C
90067	43	C
90077	43	C
90210	43	C
91601*	48	C
91406	49	C
91436	49	C
91403	51	C
91411	51	C
90066	53	C
90292	53	C
90502	55	C
91306	56	C
90027	57	C
91342	58	C
90710	59	C
90291	60	C
90744	61	C
91331	62	C
90035*	63	D
90014	64	D
90015	64	D
91303	66	D
90247	67	D
90248	67	D
91605	69	D
91343	70	D
90019*	71	D
90037*	72	D

ZIP code	Rank	Grade
90058	73	D
90003	74	D
91340	75	D
90042	76	D
91352	77	D
90017	78	D
90033	79	D
90031	80	D
90043*	81	D
90029*	82	D
90062*	83	D
90028	84	F
90068	84	F
90008	86	F
90016	86	F
90018	88	F
90007*	89	F
90044*	90	F
90047*	90	F
90063	92	F
90001	93	F
90012	94	F
90023	95	F
90021	96	F
90013	97	F
90006*	98	F
90057	99	F
90026	100	F
90061	101	F
90032	102	F
90011	103	F
90008	86	F
90002	104	F

* Interpret rank and score with caution, one or more indicators missing for this ZIP code.

Risk Factor Ranks & Grades

ZIP codes at the top of the scale or with “A” grades were identified as having few risk factors and those at the bottom or with “F” grades were identified as having many risk factors.

ZIP code	Rank	Grade	ZIP code	Rank	Grade	ZIP code	Rank	Grade
90272	1	A	91306	36	B	90012	71	D
91326	2	A	90292	37	B	90028	72	D
90049	3	A	90010	38	B	90744	73	D
90290	4	A	90066	39	B	90247	74	D
91307	5	A	90045	40	B	90032	75	D
90077	6	A	91042	41	B	90031	76	D
91436	7	A	90068	42	B	90063	77	D
91364	8	A	90035	43	C	90026	78	D
91367	9	A	90039	44	C	90019	79	D
90210	10	A	90065	45	C	90017	80	D
90036	11	A	91335	46	C	90015	81	D
90048	12	A	91405	47	C	90029	82	D
91356	13	A	90710	48	C	90023	83	D
90069	14	A	91401	49	C	90033	84	F
91316	15	A	91343	50	C	90057	85	F
91311	16	A	91406	51	C	90062	86	F
91324	17	A	91411	52	C	90007	87	F
91604	18	A	90291	53	C	90006	88	F
91345	19	A	90020	54	C	90058	89	F
91040	20	A	90248	55	C	90016	90	F
90732	21	A	91402	56	C	90043	91	F
91325	22	B	90004	57	C	90018	92	F
90293	23	B	90027	58	C	90001	93	F
91304	24	B	91606	59	C	90011	94	F
90046	25	B	91303	60	C	90008	95	F
91423	26	B	91342	61	C	90047	96	F
91602	27	B	90731	62	C	90014	97	F
90024	28	B	90005	63	D	90003	98	F
90041	29	B	91605	64	D	90037	99	F
90502	30	B	90038	65	D	90002	100	F
90034	31	B	90042	66	D	90044	101	F
90025	32	B	91601	67	D	90061	102	F
91403	33	B	91340	68	D	90021	103	F
91607	34	B	91352	69	D	90013	104	F
90067	35	B	91331	70	D			

Protective Factor Ranks & Grades

ZIP codes at the top of the scale or with “A” grades were identified as having many protective factors and those at the bottom or with “F” grades were identified as having few protective factors.

ZIP code	Rank	Grade	ZIP code	Rank	Grade	ZIP code	Rank	Grade
90048	1	A	91345	37	B	90248	73	D
90010*	2	A	90012	38	B	90744	74	D
91436	3	A	91607	39	B	90033	75	D
90272	4	A	91406	40	B	90004*	76	D
91367	5	A	91602	41	B	90020*	77	D
90290*	6	A	90046	42	B	90005*	78	D
91326	7	A	91405	43	C	91411	79	D
90069	8	A	90014	44	C	90032	80	D
91364	9	A	91304	45	C	91606*	81	D
90017	10	A	91340	46	C	90015	82	D
91307	11	A	91306	47	C	90047	83	D
90058	12	A	90031	48	C	91331	84	F
91311	13	A	91401	49	C	90023	85	F
90039	14	A	91403	50	C	91342	86	F
90049	15	A	91335	51	C	90062	87	F
91040	16	A	90034	52	C	90008	88	F
91042	17	A	90077*	53	C	90029*	89	F
90291	18	A	90710	54	C	91303	90	F
90293	19	A	90042	55	C	90006	91	F
90027	20	A	91343	56	C	90001	92	F
90067	21	A	90026	57	C	90063	93	F
91324	22	B	90068	58	C	90019*	94	F
90041	23	B	90210	59	C	90007	95	F
90045	24	B	90502	60	C	90247	96	F
90021	25	B	91601	61	C	90044	97	F
90292	26	B	91316	62	C	90016	98	F
90066	27	B	91605	63	D	90037	99	F
90732	28	B	91352	64	D	90003	100	F
91604	29	B	90038	65	D	90011	101	F
90036	30	B	91402	66	D	90018	102	F
90065	31	B	90057	67	D	90002	103	F
90731	32	B	90035	68	D	90061	104	F
91325	33	B	90028	69	D			
91423	34	B	90043	70	D			
91356	35	B	90025	71	D			
90013	36	B	90024	72	D			

* Interpret rank and score with caution, one or more indicators missing for this ZIP code.

Appendix C

Correlation Table

This table illustrates the correlations among variables and between variables and outcomes. Please refer to the following page for a full description of the variable names.

INDICATORS	Gang	Violent	Homicide	HSTruancy	MSTruancy	HSAPI	MSAPI	HSFullCred	MSFullCred	HSClass	MSClass	HSSusp	MSSusp	HSExp	MSExp	HSGrad	HSEngBel
Gang	1.00																
Violent	0.71	1.00															
Homicide	0.61	0.44	1.00														
HSTruancy	0.10	0.01	0.01	1.00													
MSTruancy	0.21	0.13	0.29	-0.07	1.00												
HSAPI	-0.68	-0.45	-0.66	0.00	-0.31	1.00											
MSAPI	-0.43	-0.19	-0.61	0.02	-0.45	0.58	1.00										
HSFullCred	-0.39	-0.28	-0.62	0.11	-0.35	0.60	0.42	1.00									
MSFullCred	-0.31	-0.19	-0.42	0.19	-0.34	0.52	0.58	0.56	1.00								
HSClass	-0.64	-0.46	-0.52	-0.05	-0.19	0.81	0.45	0.42	0.26	1.00							
MSClass	-0.31	-0.11	-0.35	-0.15	-0.31	0.40	0.71	0.19	0.29	0.37	1.00						
HSSusp	0.18	0.00	0.41	0.12	0.09	-0.39	-0.42	-0.31	-0.09	-0.32	-0.27	1.00					
MSSusp	0.05	-0.02	0.20	-0.11	0.04	-0.32	-0.42	-0.44	-0.61	-0.16	-0.23	0.13	1.00				
HSExp	0.05	0.03	0.23	0.15	-0.13	-0.01	-0.03	-0.21	0.00	-0.14	0.06	0.30	0.12	1.00			
MSExp	0.14	0.10	0.10	-0.01	-0.01	-0.14	0.03	-0.14	0.00	-0.27	0.08	-0.04	0.05	-0.04	1.00		
HSGrad	-0.50	-0.30	-0.49	0.13	-0.23	0.75	0.48	0.54	0.53	0.70	0.25	-0.21	-0.35	0.06	-0.09	1.00	
HSEngBel	0.63	0.41	0.70	0.00	0.30	-0.93	-0.60	-0.70	-0.57	-0.68	-0.35	0.39	0.39	0.09	0.14	-0.68	1.00
HSMathBel	0.47	0.35	0.49	0.04	0.15	-0.66	-0.42	-0.23	-0.26	-0.66	-0.31	0.19	0.20	0.02	0.03	-0.53	0.57
MSEngBel	0.49	0.27	0.65	-0.04	0.48	-0.63	-0.97	-0.48	-0.65	-0.48	-0.66	0.38	0.43	0.03	0.01	-0.52	0.65
MSMathBel	0.45	0.23	0.63	-0.08	0.38	-0.61	-0.92	-0.48	-0.56	-0.50	-0.63	0.47	0.47	0.06	-0.07	-0.53	0.64
ChildAbuse	0.60	0.72	0.49	-0.01	0.13	-0.51	-0.20	-0.40	-0.28	-0.44	-0.04	0.02	0.13	0.11	0.21	-0.34	0.56
Poverty	0.80	0.46	0.68	0.06	0.43	-0.76	-0.53	-0.46	-0.44	-0.68	-0.29	0.20	0.05	-0.03	0.15	-0.61	0.73
AvgRes	-0.47	-0.42	-0.24	0.05	-0.15	0.46	0.18	0.11	0.15	0.52	0.15	-0.04	0.07	0.27	-0.14	0.45	-0.32
Single	0.71	0.53	0.72	-0.02	0.26	-0.72	-0.51	-0.54	-0.45	-0.63	-0.36	0.37	0.26	0.02	0.26	-0.60	0.70
Unemp	0.75	0.88	0.51	0.04	0.25	-0.55	-0.36	-0.29	-0.26	-0.55	-0.24	0.05	0.03	-0.02	0.05	-0.42	0.50
Lang	0.46	0.04	0.31	0.21	0.23	-0.46	-0.37	-0.07	-0.16	-0.39	-0.21	0.15	0.00	0.05	0.02	-0.24	0.45
ChildCare	0.02	-0.40	0.13	0.03	0.14	-0.20	-0.26	-0.09	-0.17	-0.08	-0.16	0.25	0.14	0.06	0.03	-0.14	0.22
MedInc	-0.67	-0.46	-0.56	-0.05	-0.27	0.70	0.45	0.31	0.32	0.59	0.26	-0.29	-0.11	0.02	-0.14	0.50	-0.64
Alcohol	0.23	0.61	-0.02	-0.12	-0.06	-0.16	0.08	0.00	0.01	-0.23	0.04	-0.07	-0.04	-0.07	-0.04	-0.15	0.04
Uninsured	0.76	0.46	0.54	0.18	0.28	-0.72	-0.46	-0.26	-0.26	-0.69	-0.29	0.19	0.03	-0.05	0.12	-0.55	0.64
Green	-0.23	-0.14	-0.23	0.02	-0.09	0.35	0.24	0.07	0.15	0.23	0.11	-0.32	-0.07	-0.03	-0.04	0.23	-0.31
Grocery	-0.12	0.02	-0.16	-0.06	-0.07	0.14	0.04	0.08	0.02	0.15	0.12	-0.02	-0.03	-0.06	-0.15	0.07	-0.15
Vote	-0.50	-0.15	-0.37	-0.14	-0.28	0.55	0.40	0.14	0.23	0.45	0.28	-0.11	-0.04	0.11	-0.07	0.39	-0.51
YVRev	-0.01	0.02	-0.08	-0.05	-0.07	0.01	0.16	0.09	0.05	-0.09	0.14	-0.12	-0.06	-0.08	0.21	-0.07	-0.08
VPServ	0.64	0.80	0.29	0.05	0.04	-0.46	-0.18	-0.10	-0.12	-0.53	-0.12	0.02	-0.03	-0.02	0.05	-0.43	0.34

Variable Name Definitions

Gang	Gang crime rate
Violent	Violent crime rate
Homicide	Homicide rate
HSTruancy	High school truancy
MSTruancy	Middle school truancy
HSAPI	High school API
MSAPI	Middle school API
HSFullCred	High school teachers with full credentials
MSFullCred	Middle school teachers with full credentials
HSClass	High school average class size
MSClass	Middle school average class size
HSSusp	High school suspension rate
MSSusp	Middle school suspension rate
HSExp	High school expulsion rate
MSExp	Middle school expulsion rate
HSGrad	High school graduation rate
HSEngBel	High school percent of students scoring below basic in English CST exam
HSMathBel	High school percent of students scoring below basic in Mathematics CST exam
MSEngBel	Middle school percent of students scoring below basic in English CST exam
MSMathBel	Middle school percent of students scoring below basic in Mathematics CST exam
ChildAbuse	Substantiated child abuse rate
Poverty	Percent families in poverty
AvgRes	Average length of residence
Single	Percent single parent families with children
Unemp	Percent people unemployed
Lang	Percent people speaking language other than English at home
ChildCare	Percent children without childcare spaces
MedInc	Median household income
Alcohol	Alcohol outlets per 1,000 people
Uninsured	Percent people without insurance
Green	Greenspace per 1,000 people
Grocery	Grocery stores per 1,000 people
Vote	Percent active voting population
YVRev	Revenue from youth violence prevention nonprofits per capita
VPServ	Violence prevention services per 1,000 people

Note: For a list of data sources for variables used in the Scorecard analysis please refer to the methodology document, Appendix D.

Appendix D

Data Sources & Methodology

Narrative

The 104 ZIP codes chosen for this analysis were based on ZIP codes which were either entirely or partially located within the geographic boundary of the City of Los Angeles. Several ZIP codes that met this criterion were removed from the analysis due to missing data. The following ZIP codes were not covered by LAUSD school attendance boundaries and therefore had no school data match: 90056, 90059, 90230, 90232, 90245, 90402, 90501, 91214, 91504, and 91344. Three ZIP codes were located mostly on school campuses and therefore had no data available for a majority of the indicators, these included: 90090, 90095, and 91330. ZIP code 91608 is located in Universal City and therefore had no population data available. Three additional ZIP codes were removed from the analysis due to extremely low population estimates (low population in 2010 & 2009, zero in 2008, not available for 2007), these included: 90071, 90089, and 90094. Also, ZIP code 90064 was inadvertently removed from the analysis, although based on this ZIP code's safety index values it would have not ranked in the top or bottom ten ZIP codes highlighted in the Community Safety Scorecards.

The numbers for each dataset below correspond with the superscript numbers seen on each scorecard.

Safety Score

The safety score was calculated using the three indicators listed below. These indicators were indexed to create a standardized score for each ZIP code. Because previous research did not indicate or was mixed on the need to weigh one indicator more than another, therefore the standardized value for each indicator was weighed equally to construct the final index score. This score was then ranked among the 104 ZIP codes in the City of Los Angeles used in the analysis. The score was also converted into grades based on which quintile it fell into for each index, with "A" being a safe neighborhood and "F" an unsafe neighborhood. Based on this scoring technique, the scores presented for each ZIP code are relative to the scores of the other ZIP codes in the City of Los Angeles and are not tied to any external scoring

criterion. Numbers correspond to the footnotes in the actual scorecards.

- 1 Gang Related Crime Rate:** Calculated using Los Angeles Police Department (LAPD) crime data from 2007 divided by 2007 Population Statistics from Geolytics, multiplied by 1,000.
- 2 Violent Crime Rate:** Calculated using the total number of Homicide, Aggravated Assault and Robbery crimes from LAPD Crime data from 2008, divided by 2008 Population Statistics from Geolytics, multiplied by 1,000.
- 3 Child Abuse Rate:** Calculated using number of Substantiated Child Abuse Referrals from the Los Angeles County Department of Children and Family Services 2008 data, divided by 2008 Population Statistics for People under 18 from Claritas, multiplied by 1,000.

As shown in the full correlation table (on page 46), the indicators used to calculate the safety score had strong correlations with each other (a strong correlation being one with a coefficient greater/less than +/-0.60), and therefore these relationships may be intensifying the overall score for each ZIP code.

School Score

The school score was calculated using the five indicators listed below. These indicators were indexed to create a standardized score for each ZIP code. Because previous research did not indicate or was mixed on the need to weigh one indicator more than another, therefore the standardized value for each indicator was weighed equally to construct the final index score. This score was then ranked among the 104 ZIP codes in the City of Los Angeles used in the analysis. The score was also converted into grades based on which quintile it fell into for each index, with "A" meaning the neighborhood has a good school score and "F" meaning it has a poor one. Based on this scoring technique, the scores presented for each ZIP code are relative to the scores of the other ZIP codes in the City of Los Angeles and are not tied to

any external scoring criterion. If a ZIP code was missing a value for one of the indicators used in the index, the score was calculated using the remaining indicators, ZIP codes where this was the case are noted with an asterisk in the Ranks & Grades tables.

As the analysis aims to incorporate the impact of various indicators from middle schools and high schools in the ZIP code areas, each ZIP code was connected to values from a major middle school and a major high school. “Major school” is defined as a school which has a school attendance boundary covering the majority of the ZIP code boundary. Usually the school attendance boundaries do not match exact ZIP code boundaries – often they are larger than ZIP code boundaries or partially cover multiple ZIP code areas. School attendance boundaries within each ZIP code were identified and the schools with the largest attendance boundaries of each ZIP code area were selected as the “Major Schools” for the specific ZIP code. As a result, each ZIP code was matched with one middle school and one high school. Some schools are listed for more than one ZIP code.

As stated above, some schools cover more than one ZIP code area and some schools are not counted toward any ZIP codes during the ZIP code matching process. Using the school attendance boundary coverage is a relatively good way of attributing the values of a certain school to the residents of a certain neighborhood, although this process does overlook the data belonging to other schools which still exist and in certain communities which may not be considered “Major Schools”.

- 4 High School API:** Assigned to each ZIP code using the above defined methodology, data from California Department of Education 2008 Base API file.
- 5 High School Truancy:** Assigned to each ZIP code using the above defined methodology, data from California Department of Education Dataquest Query system for school year 2008-2009.
- 6 Middle School API:** Assigned to each ZIP code using the above defined methodology, data from California Department of Education 2008 Base API file.
- 7 Middle School Truancy:** Assigned to each ZIP code using the above defined methodology, data from California Department of Education Dataquest Query system for school year 2008-2009.
- 8 Graduation Rate:** Assigned to each ZIP code using above defined methodology, data from California Department of Education Dataquest Query system for school year 2007-2008.

As shown in the full correlation table, there was a strong correlation between Graduation Rate and High School API (a strong correlation being one with a coefficient greater/less than +/-0.60), and therefore this relationship may be intensifying the overall score for each ZIP code.

Risk Factors

The risk factor score was calculated using the five indicators listed below. These indicators were indexed to create a standardized score for each ZIP code. This score was then ranked among the 104 ZIP codes in the City of Los Angeles used in the analysis. The score was also converted into grades based on which quintile it fell into for each index, with “A” meaning there are few risk factors in the neighborhood and “F” meaning there are many. Based on this scoring technique, the scores presented for each ZIP code are relative to the scores of the other ZIP codes in the City of Los Angeles and are not tied to any external scoring criterion.

Risk factors to include in this score were based on the strength of the correlations between individual indicators and the outcome indicators (outcome indicators included: Gang Crime Rate, Violent Crime Rate, Homicide Rate, Child Abuse Rate, High School and Middle School API, High School and Middle School Truancy, and Graduation Rate). The indicators with the most impact on the most outcome indicators were chosen to index together to create the risk factor score. Refer to the full correlation table for details.

- 9 Percent Families in Poverty:** Calculated using the number of families below poverty divided by the total number of families in each ZIP code, data from Claritas 2010.
- 10 Percent Unemployment:** Calculated using the number of people unemployed divided by the labor force (those employed and unemployed, omitting those not in the labor force and those in the Armed Forces), data from Claritas 2010.
- 11 Percent Single Parent Families:** Calculated using the number of families with single mother and single father householders divided by the total number of families with children, data from Claritas 2010.
- 12 Percent High School Students Scoring Below Basic in English:** Assigned to each ZIP code using methodology defined in the school score section. Calculated using data from the California Standardized Testing and Reporting (STAR) data from 2009 for the CST English-Language Arts test.

We added the percent of students in each grade scoring below and far below basic, then averaged the total below basic percentage from the grades participating in each school to obtain a single percentage for each school.

13 Percent Middle School Students Scoring Below

Basic in English: Assigned to each ZIP code using methodology defined in the school score section. Calculated using data from the California Standardized Testing and Reporting (STAR) data from 2009 for the CST English-Language Arts test. We added the percent of students in each grade scoring below and far below basic, then averaged the total below basic percentage from the grades participating in each school to obtain a single percentage for each school.

As shown in the full correlation table, several indicators used in calculating the overall school score exhibited strong correlations with each other (a strong correlation being one with a coefficient greater/less than +/-0.60), and therefore these relationships may be intensifying the overall score for each ZIP code.

Protective Factors

The protective factor score was calculated using the five indicators listed below. These indicators were indexed to create a standardized score for each ZIP code. Because previous research did not indicate or was mixed on the need to weigh one indicator more than another, therefore the standardized value for each indicator was weighed equally to construct the final index score. This score was then ranked among the 104 ZIP codes in the City of Los Angeles used in the analysis. The score was also converted into grades based on which quintile it fell into for each index, with “A” meaning there are many protective factors and “F” meaning there are few. Based on this scoring technique, the scores presented for each ZIP code are relative to the scores of the other ZIP codes in the City of Los Angeles and are not tied to any external scoring criterion. If a ZIP code was missing a value for one of the indicators used in the index, the score was calculated using the remaining indicators, ZIP codes where this was the case are noted with an asterisk in the Ranks & Grades tables.

Protective factors to include in this score were based on the strength of the correlations between individual indicators and the outcome indicators (outcome indicators included: Gang Crime Rate, Violent Crime

Rate, Homicide Rate, Child Abuse Rate, High School and Middle School API, High School and Middle School Truancy, and Graduation Rate). The indicators with the most impact on the most outcome indicators were chosen to index together to create the risk factor score. Refer to the full correlation table for details.

14 Violence Prevention Services Rate: Calculated using a count of 2-1-1 services for each ZIP code, divided by 2010 Population Statistics from Claritas, multiplied by 1,000. The 2-1-1 services were chosen based on criteria determined through previous primary and secondary research performed by the Advancement Project for its *Call to Action* report and multiple Needs Assessments commissioned by the City of Los Angeles, the County of Los Angeles, and the Housing Authority of the City of Los Angeles. The primary research consisted of leading focus groups, conducting one-on-one interviews, and distributing surveys to residents and other primary stakeholders within numerous neighborhoods with high rates of violence in Los Angeles County.

15 Youth Violence Prevention Nonprofit Revenue per Capita: Calculated using the total revenue from youth violence prevention nonprofits located in each ZIP code, data from the National Center for Charitable Statistics 2006 database, divided by 2007 Population Statistics from Geolytics. Nonprofits were chosen as Youth Violence Prevention based on the categories provided by the National Taxonomy of Exempt Entities Core Codes Classification System. The chosen entities likely address the root conditions of violence, which are based on past research from the Advancement Project’s *Call to Action* report and other subsequent research. These nonprofits include those that provide direct services, advocacy, policy, or research analysis on the topic of violence.

16 Percent High School Teachers with Full Credentials: Assigned to each ZIP code using methodology defined in the school score section, data from California Department of Education 2008 Base API file.

17 Percent Middle School Teachers with Full Credentials: Assigned to each ZIP code using methodology defined in the school score section, data from California Department of Education 2008 Base API file.

18 Percent Active Voting Population: Calculated using voting data from the Statewide Database at the University of California Berkeley for voters who voted in the 2008 General Election, divided by the 2008 Population Statistics for people age 18 and older from Claritas. For the same purpose as described for school data, each ZIP code area needs to contain voter precinct information. Unlike the school attendance boundaries, voter precinct boundaries are a lot smaller than ZIP code boundaries and it is impossible to determine which single precinct represents which ZIP code area. To resolve this issue, multiple precincts located in each ZIP code boundary were matched to ZIP code and the sum of voters in the ZIP code boundary is calculated. If a precinct was entirely contained by ZIP code boundary or if more than 50 percent of the precinct area was contained by the ZIP code boundary, the number of voters from the precinct was counted under that specific ZIP code. As a result, each precinct are counted only once throughout the matching process. Due to this method, it is expected that the calculated voter participation rate will be an underestimation of actual voter participation rate.

geographies, especially with school and crime data, which cannot be seen here due to the larger geographical scope. Also, the scorecards do not take into account community factors that may more accurately represent conditions in each ZIP code, as access to that type of data was unavailable for this analysis. ■

Data & Analysis Limitations

The data and analysis used to create the scorecards come with several limitations, several of which are outlined in each specific index section above. Overall, the methodology for grading each index was based on which quintile the index score fell into, and therefore was a relative representation of each ZIP code compared to the remaining ZIP codes in the City of Los Angeles. For future research, it would be best to use an external scoring criterion for each index category as to better represent and track how each ZIP code's grade may improve or worsen in subsequent analysis. Also, for the indices where the individual indicators used in creating the final scores were highly correlated among each other, it would be best in future analysis to choose one indicator from each correlated pair that best represents the concept that is being measured and, if necessary, do additional research to determine if other indicators can replace the ones being removed. Additionally, the data for each indicator was not representative of the same calendar year, this was partially addressed by using the population from the data's corresponding year for rate calculations. Also, the analyses were completed at a ZIP code level due to the unavailability of data at a smaller geographical level. There may be trends that could be seen at smaller

Writing and Editing

Maribel Meza

Senior Policy Analyst, Advancement Project

Data Analysis

Dagmar Pudrzynska Paul, MCJ

Data Coordinator, Advancement Project

Juhyun Yoo, MPA

Research Analyst, Advancement Project

Editorial Review Committee

Connie Rice, JD

Founding Co-Director of Advancement Project

Susan Lee, JD

Director of Urban Peace, Advancement Project

John Kim

Co-Director of Advancement Project
and Director of Healthy City

Chris Schweidler, PhD

Senior Research Manager, Advancement Project

Amy Sausser, MA

Director of Foundation Relations
& Communications, Advancement Project

Billie Weiss, MPH

Associate Director, Southern California
Injury Prevention Program,
UCLA School of Public Health

Paul Hsu, PhD

Assistant Adjunct Professor
UCLA School of Public Health

Acknowledgements

The Violence Prevention Coalition
of Greater Los Angeles

The Robert Wood Johnson Foundation

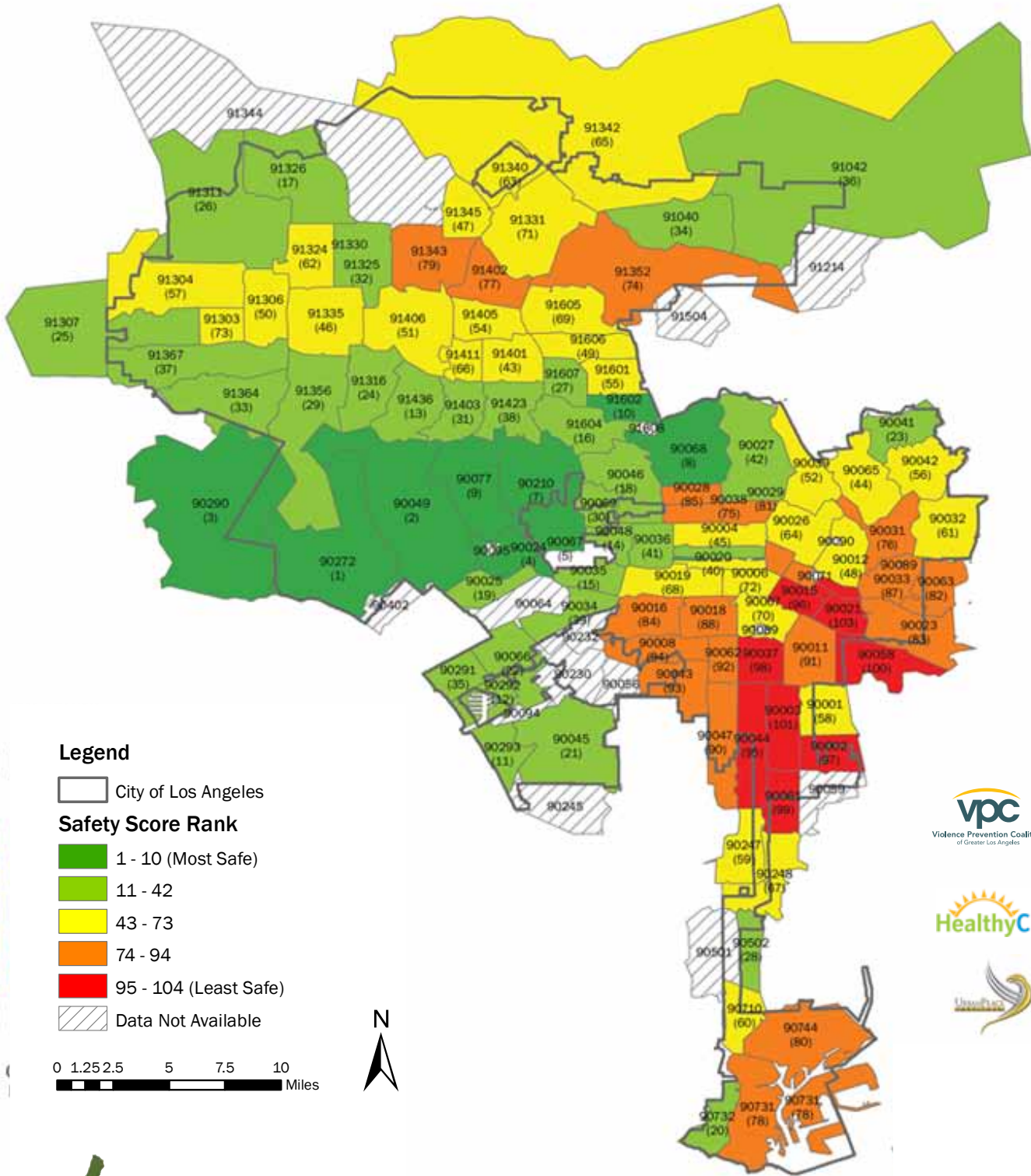
The California Endowment

The California Wellness Foundation

The Jewish Community Foundation

Printing, Fox Printing

Safety Score by ZIP code, City of Los Angeles



ADVANCEMENT PROJECT
 1910 West Sunset Blvd. Suite 500
 Los Angeles, CA 90026
 www.AdvancementProjectCA.org
 213.989.1300

Map created by Healthy City, November 2010. Data classified to highlight the ten most safe ZIP codes in dark green and the ten least safe ZIP codes in red. Ranks, identified in parentheses, based on Safety Score Index created using Gang Crime Rate (LAPD, 2007), Violent Crime Rate (LAPD, 2008), and Child Abuse Rate (DCFS, 2008). Geographic data from NAVTEQ, 2010.